



# Working Instructions

## - mechanical -



*ELM*

*J10, J10i2*



## CONTENTS

<b>1</b>	<b>Exterior Views.....</b>	<b>4</b>
1.1	ELM J10 / J10i2.....	4
<b>2</b>	<b>Tools .....</b>	<b>5</b>
<b>3</b>	<b>Disassembly.....</b>	<b>6</b>
3.1	Battery Cover Assy .....	6
3.2	Battery.....	8
3.3	Antenna Cover.....	8
3.4	Screw Len: 4.5 Diam: 1.4 .....	10
3.5	Screw Len: 3.25 Diam: 1.4 .....	10
3.6	Front Cover Assy .....	10
3.7	Carrier Assy.....	12
3.8	Loudspeaker.....	14
3.9	Display 2.2 TFT.....	15
3.10a	Carrier Frame Assy VT+Receiver (J10 only) .....	16
3.10b	Carrier Frame Assy Receiver (J10i2 only).....	17
<b>4</b>	<b>Replacement .....</b>	<b>19</b>
4.1	Battery Cover Assy .....	19
4.2	Battery.....	19
4.3	Antenna Cover.....	19
4.4	Front Cover Assy .....	19
4.5	Display 2.2 TFT.....	20
4.6	Carrier Assy.....	20
4.7	Loudspeaker.....	20
4.8	Carrier Frame VT+Receiver (J10 only).....	20
4.9	Carrier Frame Receiver (J10i2 only) .....	21
4.10	Keyboard .....	22
4.11	Co-Brand.....	24
4.12	Camera Key .....	26
4.13	Camera FPC.....	28
4.14	Keypad Dome Sheet.....	31
4.15	Camera 5MPixel.....	33
4.16	Shield Can Lid of Camera.....	35
4.17	Shield Can Lid of AGPS (J10i2 only) .....	36
4.18	Shield Can Lid of BT/WLAN.....	37
4.19	Shield Can Lid of BB.....	38
4.20	Sim Reader Tape .....	39
4.21	Vibrator .....	41
4.22	Liquid Intrusion Indicator .....	42



4.23	KRH Label .....	43
4.24	Speaker Mesh .....	44
4.25	Volume Key .....	45
4.26	Receiver FPC .....	46
4.27	VGA Camera (J10 Only) .....	48
5	Reassembly.....	49
5.1a	Carrier Frame Assy Receiver & PBA (J10i2 only) .....	49
5.1b	Carrier Frame Assy VT+Receiver (J10 only) .....	50
5.2	Display 2.2 TFT & PBA.....	52
5.3	Loudspeaker.....	53
5.4	Carrier Assy.....	53
5.5	Front Cover Assy .....	55
5.6	Screw Len: 3.25 Diam: 1.4 .....	56
5.7	Screw Len: 4.5 Diam: 1.4 .....	56
5.8	Antenna Cover.....	56
5.9	Battery.....	57
5.10	Battery Cover Assy .....	58
6	Revision History .....	60

***For general information about mechanical repair related issues, refer to  
1220-1333: Generic Repair Manual - mechanical***



# 1 Exterior Views

## 1.1 ELM J10 / J10i2

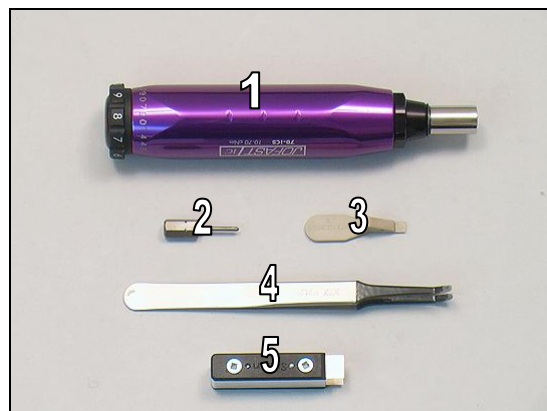




## 2 Tools

### SPECIAL TOOLS

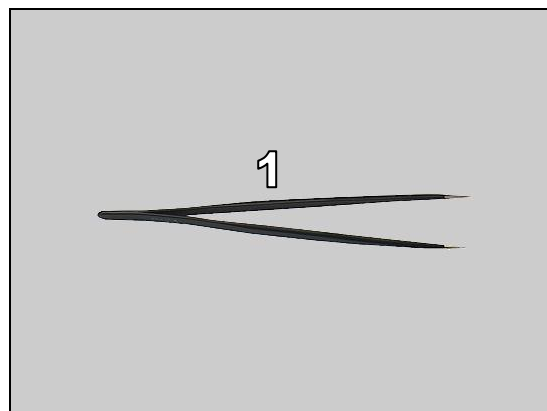
1. Torque Screwdriver
2. Bits (JCIS No 0)
3. Front Opening Tool
4. Flex Film Assembly Tool
5. Camera Removal Tool



**For part no's on the tools above, refer to the 'Tools Catalogue/Matrix'!**

### STANDARD TOOLS

1. Tweezers (ESD-safe & non-metallic)

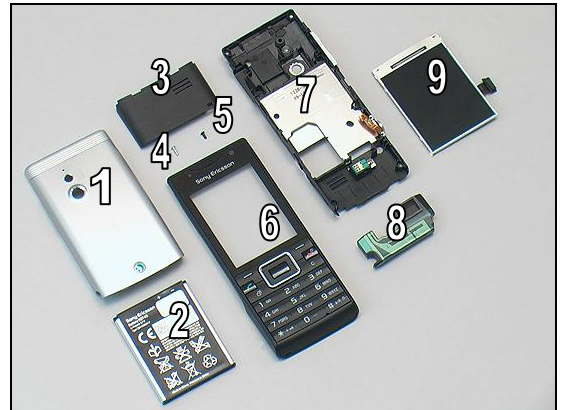




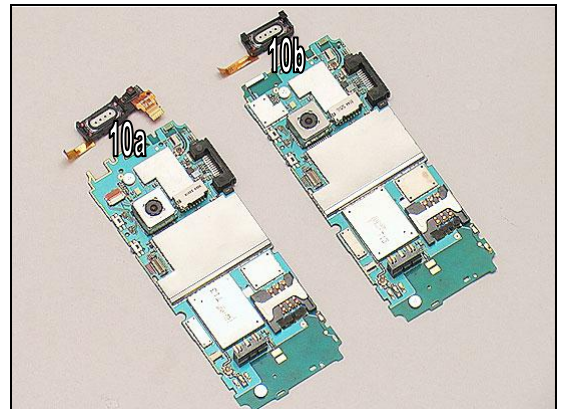
## 3 Disassembly

The disassembly is done in the following order:

1. Battery Cover Assy
2. Battery
3. Antenna Cover
4. Screw Len: 4.5 Diam: 1.4
5. Screw Len: 3.25 Diam 1.4
6. Front Cover Assy
7. Carrier Assy
8. Loudspeaker
9. Display 2.2 TFT



- 10a. Carrier Frame Assy VT+Receiver & PBA (J10 only)
- 10b. Carrier Frame Assy Receiver & PBA (J10i2 only)



### 3.1 Battery Cover Assy

Turn the phone over.



There are eight hooks securing the Battery Cover Assy.



## Disassembly

Insert the Front Opening Tool into the slot and unlock the hook on the left side.



Use the Front Opening Tool to unlock the hook on the top,



and unlock the other hook on the top as shown in the picture.



Lift it off to remove it.





## Disassembly

### 3.2 Battery

Raise the bottom of the Battery to release it.



Remove the Battery.



### 3.3 Antenna Cover

There are seven hooks securing the Antenna Cover.



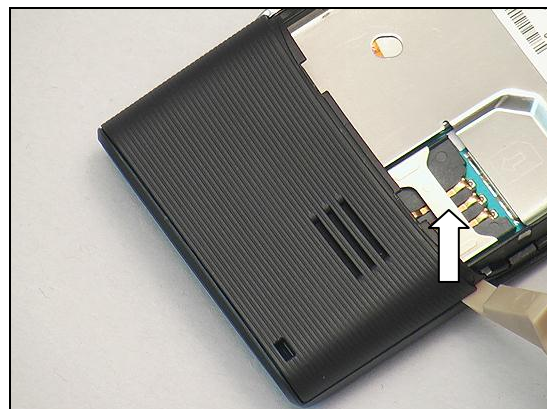
Insert the Front Opening Tool into top left corner of the Antenna Cover and lift it off.



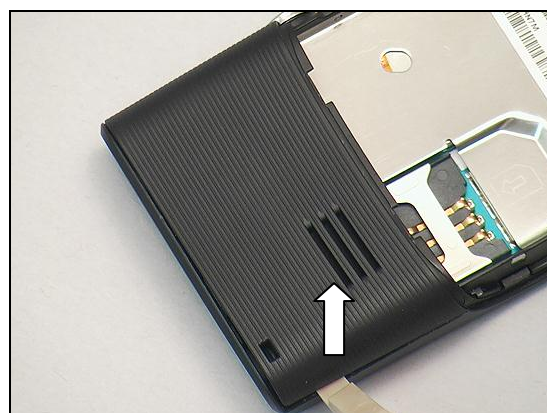


## Disassembly

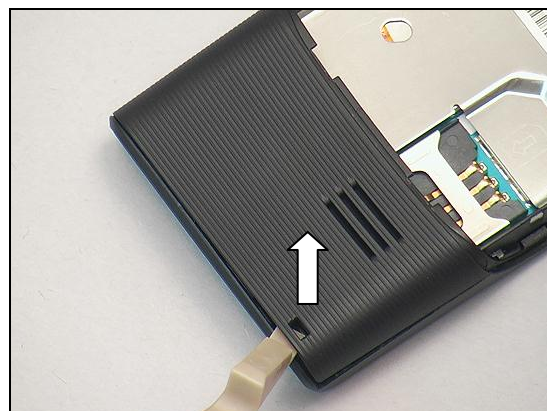
Use the Front Opening Tool to unlock the hook on the left side of the Antenna Cover.



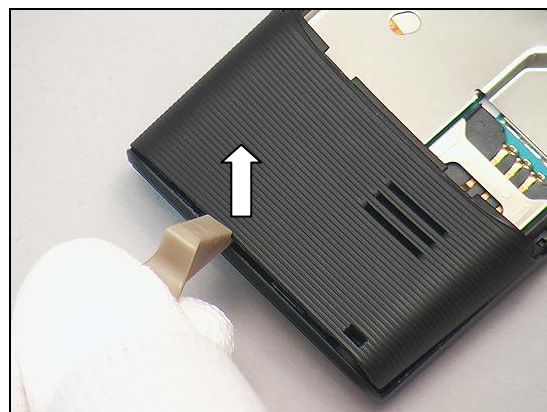
Continue to unlock the other hook on the left side as shown in the picture.



Use the Front Opening Tool to unlock the hook at the bottom of the Antenna Cover.

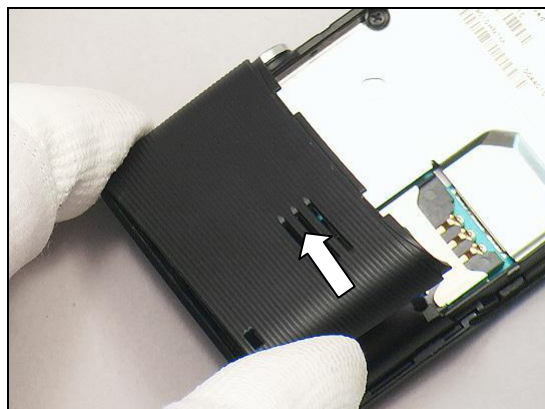


Continue to unlock the other hook at the bottom as shown in the picture.



## Disassembly

Remove the Antenna Cover with fingers.



### 3.4 Screw Len: 4.5 Diam: 1.4

Remove the Screw Len: 4.5 Diam: 1.4 by using the JCIS Bit No.0.



### 3.5 Screw Len: 3.25 Diam: 1.4

Remove the Screw Len: 3.25 Diam: 1.4 by using the JCIS Bit No.0.



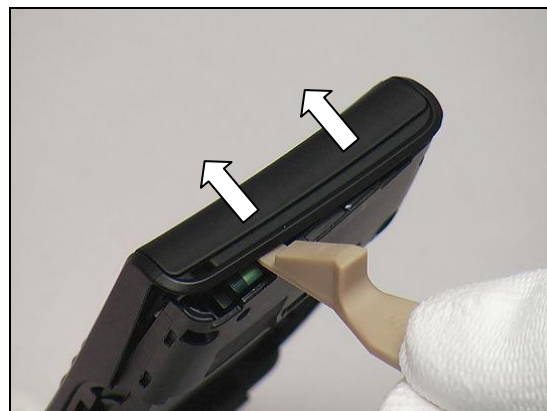
### 3.6 Front Cover Assy

There are seven hooks securing the Front Cover Assy.

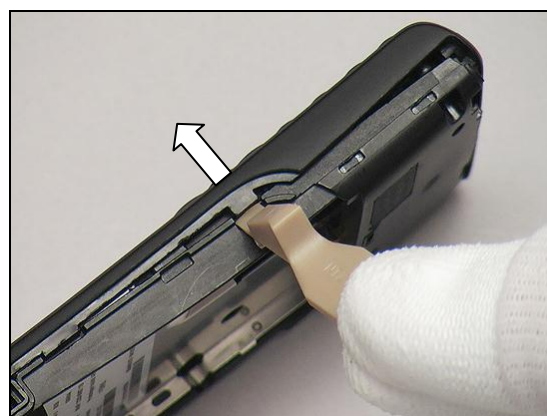


## Disassembly

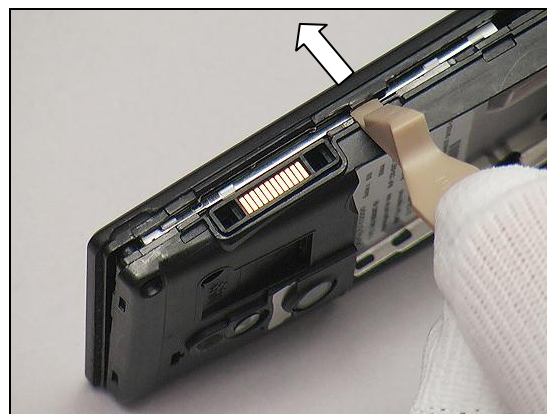
Insert the Front Opening Tool into the bottom of the Front Cover Assy and release these two hooks as shown in the picture.



Use the Front Opening Tool to unlock the hook on the left side of the Front Cover Assy.



Continue to unlock the other hook on the left side as shown in the picture.



Use the Front Opening Tool to release the hook on the right side of the Front Cover Assy.







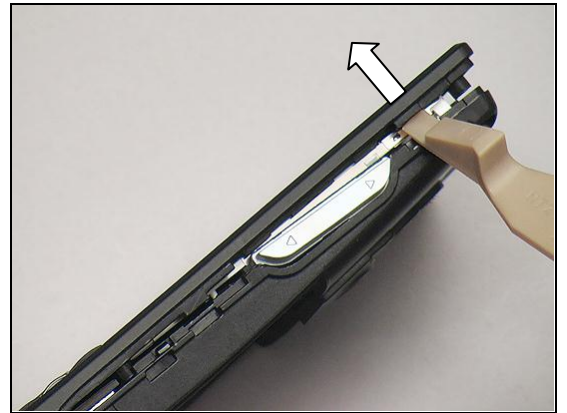
## Disassembly

Continue to unlock the hook in the middle of the right side.

**Be careful not to damage the Volume Key and the connector!**



Do the same with the hook on the top right.

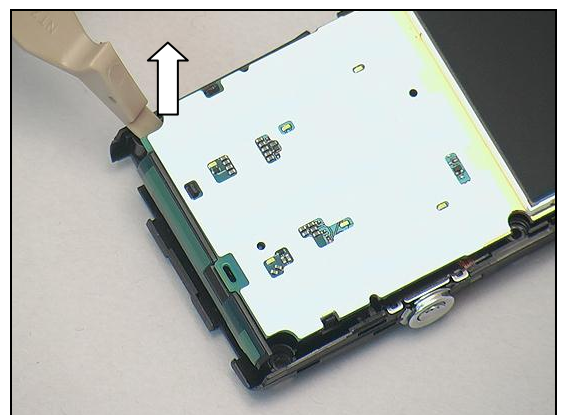


Remove the Front Cover Assy with fingers.



### 3.7 Carrier Assy

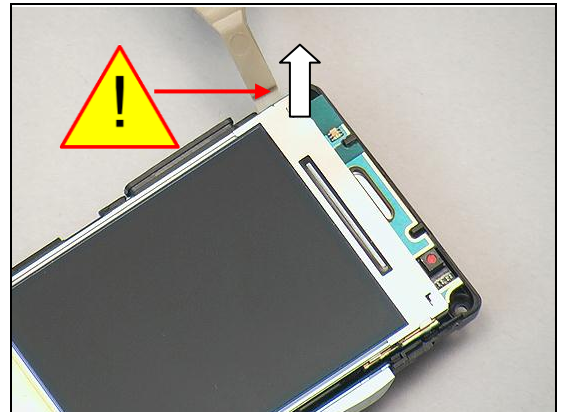
Insert the Front Opening Tool into the corner as shown in the picture to release the bottom left of the PBA from the Carrier Assy.



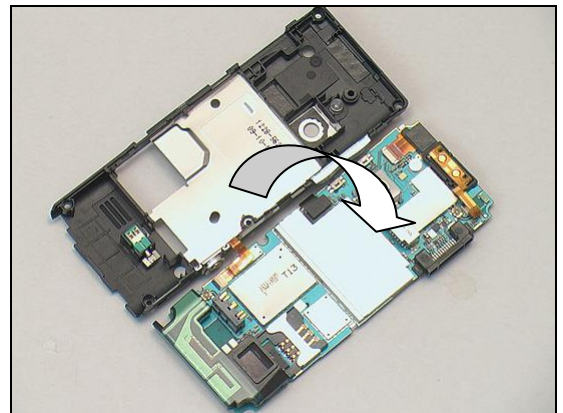


## Disassembly

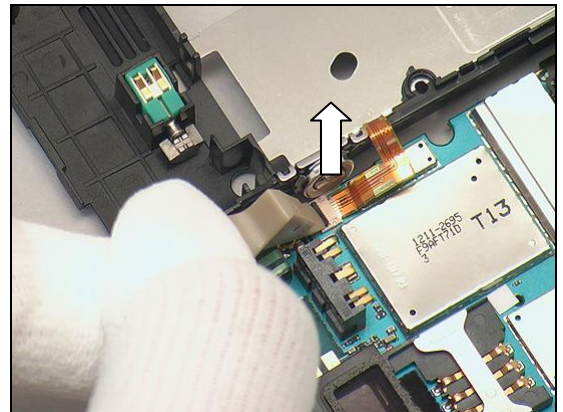
Do the same with the top left of the PBA.



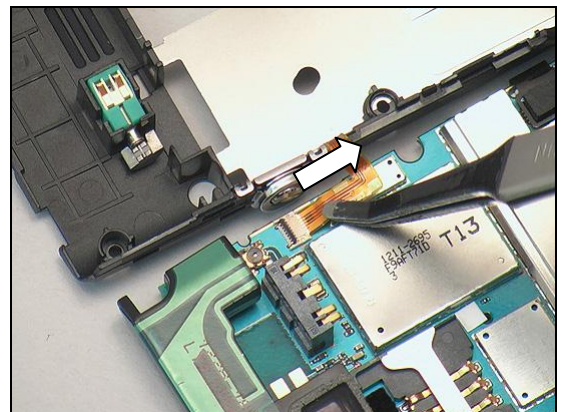
Raise the PBA with fingers and place it next to the Carrier Assy.



Use the Front Opening Tool to disconnect the connector,



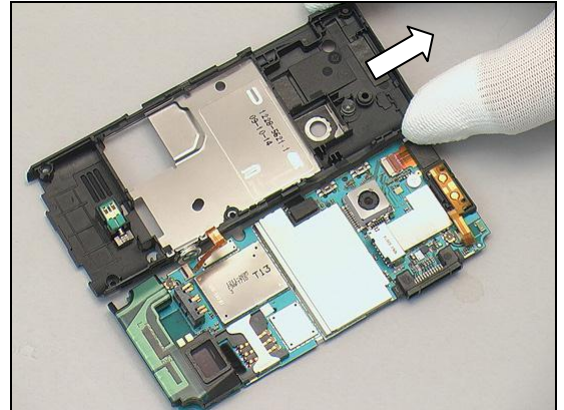
and remove it by using the Flex Film Assembly Tool.





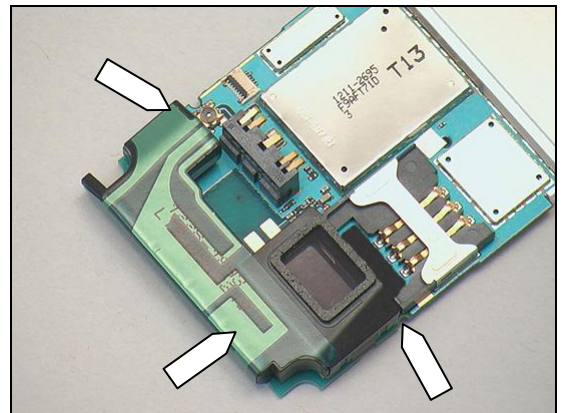
## Disassembly

Remove the Carrier Assy from the PBA with fingers.



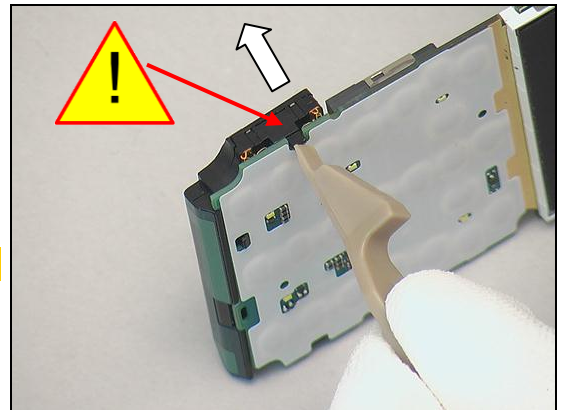
### 3.8 Loudspeaker

There are three hooks securing the Loudspeaker.

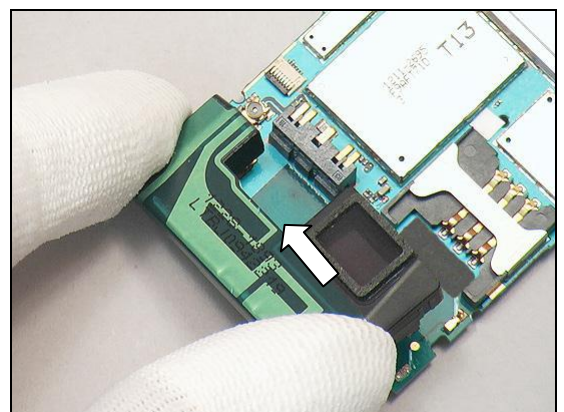


Gently use the Front Opening Tool to push the hook upwards as shown in the picture to release the left side of the Loudspeaker.

**Be careful not to damage the hook!**



Remove the Loudspeaker with fingers.







## Disassembly

### 3.9 Display 2.2 TFT

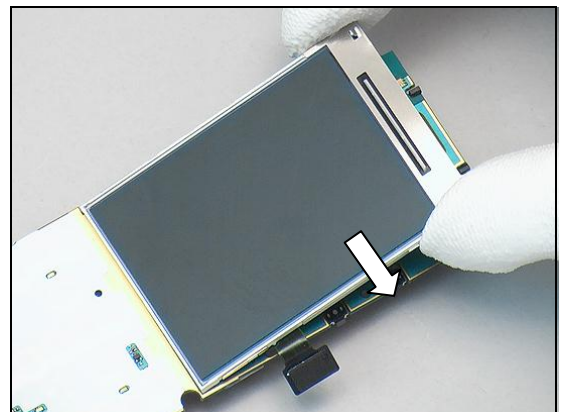
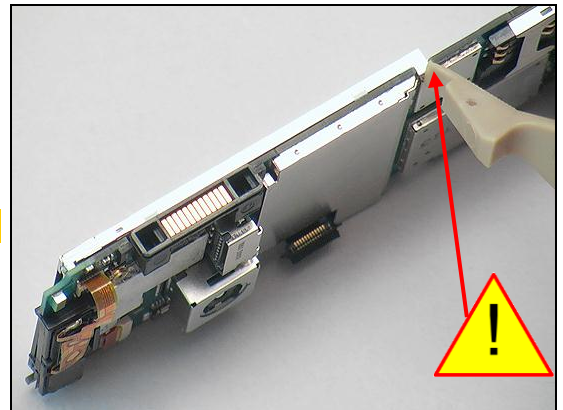
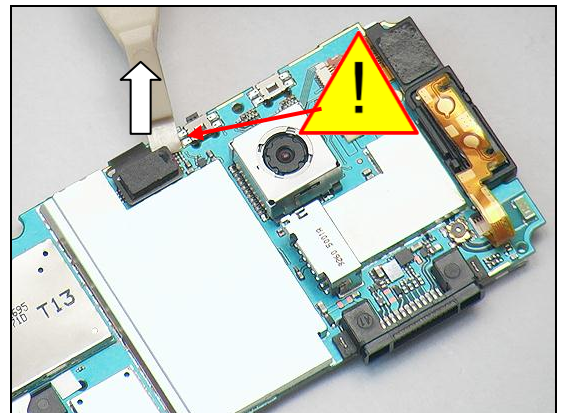
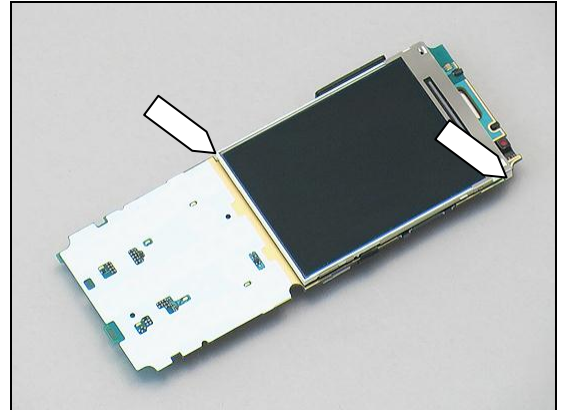
There are two hooks securing the Display 2.2 TFT and the PBA.

Use the Front Opening Tool to disconnect the connector.

Gently push with the Front Opening Tool to release the hook on the left side of the Display 2.2 TFT.

**Be careful not to damage the hook!**

Remove the Display 2.2 TFT from the PBA with fingers.

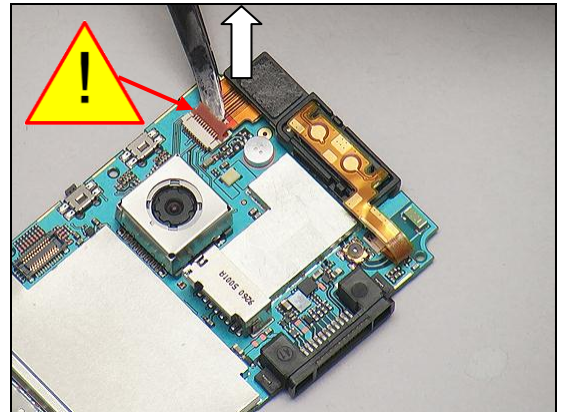




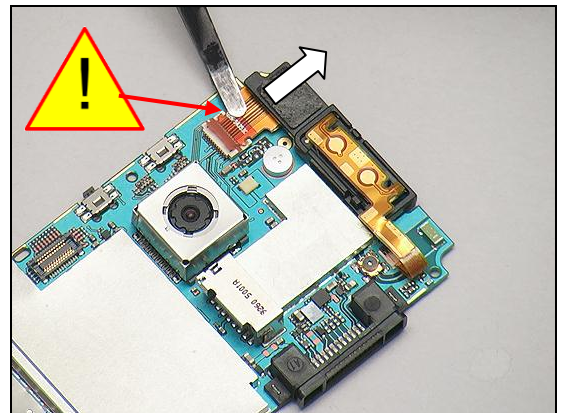
## Disassembly

### 3.10a Carrier Frame Assy VT+Receiver (J10 only)

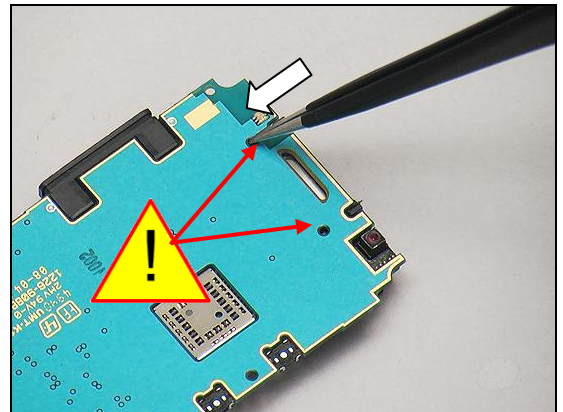
Use the Flex Film Assembly Tool to disconnect the connector,



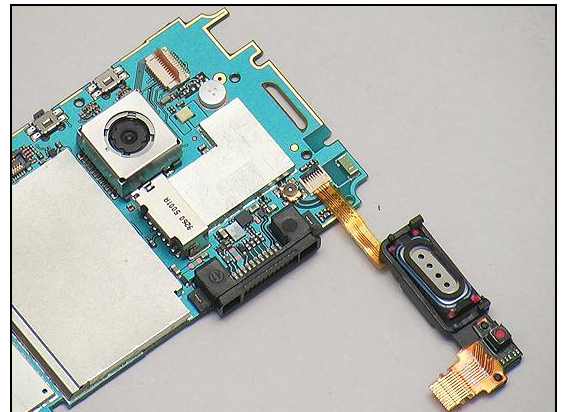
and remove it by using the Flex Film Assembly Tool.



Turn the PBA over and gently use the tweezers to push these two guiding pins as shown in the picture.



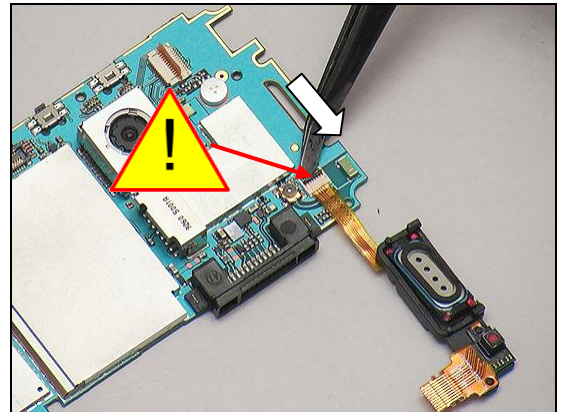
Lift the Carrier Frame Assy VT+Receiver off with fingers and place it next to the PBA.



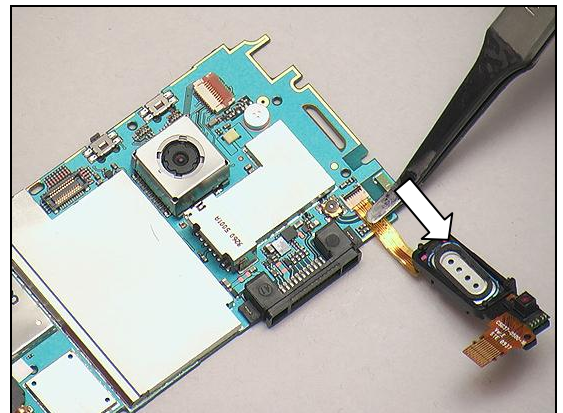


## Disassembly

Use the Flex Film Assembly Tool to disconnect the connector.

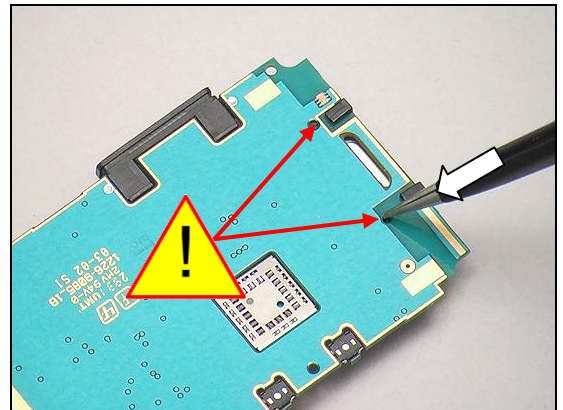


Remove the Carrier Frame Assy VT+Receiver.

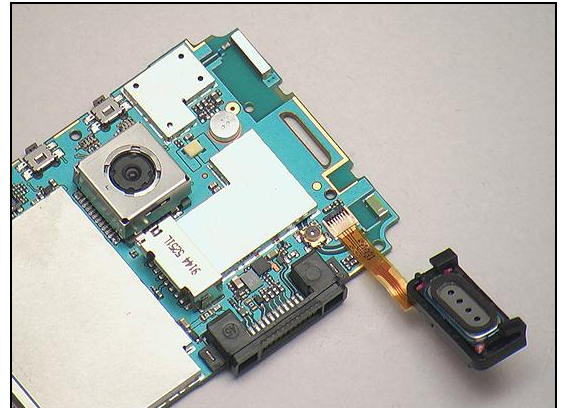


### 3.10b Carrier Frame Assy Receiver (J10i2 only)

Gently use the tweezers to push these two guiding pins as shown in the picture.



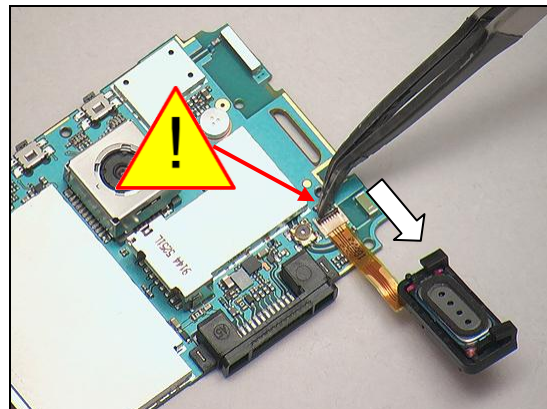
Lift the Carrier Frame Assy Receiver off with fingers and place it next to the PBA.



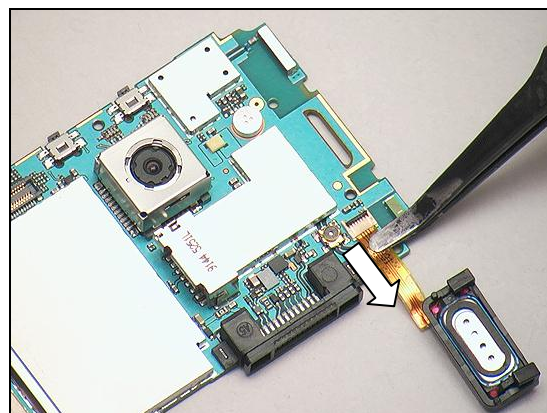


## Disassembly

Use the Flex Film Assembly Tool to disconnect the connector.



Remove the Carrier Frame Receiver.





## 4 Replacement

### 4.1 Battery Cover Assy

*Follow the 3.1 Disassembly instructions!*

Prepare the new Battery Cover Assy.

*Follow the 5.10 Reassembly instructions!*



### 4.2 Battery

*Follow the 3.1 – 3.2 Disassembly instructions!*

Prepare the new Battery.

*Follow the 5.9 – 5.10 Reassembly instructions!*



### 4.3 Antenna Cover

*Follow the 3.1 – 3.3 Disassembly instructions!*

Prepare the new Antenna Cover.

*Follow the 5.8 – 5.10 Reassembly instructions!*



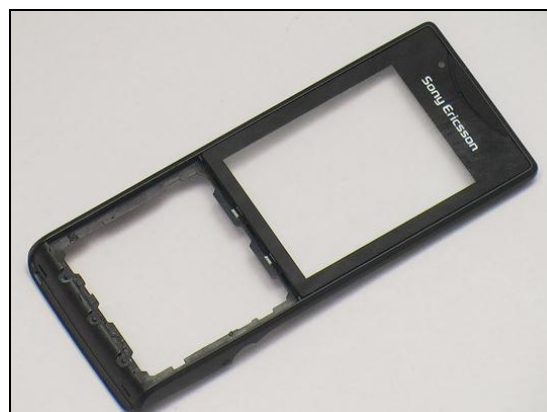
### 4.4 Front Cover Assy

*Follow the 3.1 – 3.6 Disassembly instructions!*

Prepare the new Front Cover Assy, Co-Brand and Keyboard.

*Follow the 4.10 – 4.11 Installation instructions!*

*Follow the 5.5 – 5.10 Reassembly instructions!*



## Replacement

### 4.5 Display 2.2 TFT

*Follow the 3.1 – 3.9 Disassembly instructions!*

Prepare the new Display 2.2 TFT.

*Follow the 5.2 – 5.10 Reassembly instructions!*



### 4.6 Carrier Assy

*Follow the 3.1 – 3.7 Disassembly instructions!*

*Follow the 4.13, 4.12, 4.20, 4.24 Removal instructions!*

Prepare the new Carrier Assy and Speaker Mesh.

*Follow the 4.13, 4.12, 4.20, 4.23 – 4.24 Installation instructions!*

*Follow the 5.4 – 5.10 Reassembly instructions!*



### 4.7 Loudspeaker

*Follow the 3.1 – 3.8 Disassembly instructions!*

Prepare the new Loudspeaker.

*Follow the 5.3 – 5.10 Reassembly instructions!*



### 4.8 Carrier Frame VT+Receiver (J10 only)

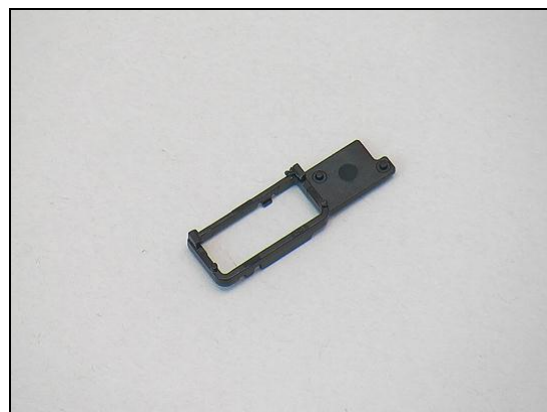
*Follow the 3.1 – 3.7, 3.9 – 3.10a Disassembly instructions!*

*Follow the 4.25 – 4.26 Removal instructions!*

Prepare the new Carrier Frame VT+Receiver.

*Follow the 4.25 – 4.26 Installation instructions!*

*Follow the 5.1b – 5.2, 5.4 – 5.10 Reassembly instructions!*



## Replacement

### 4.9 Carrier Frame Receiver (J10i2 only)

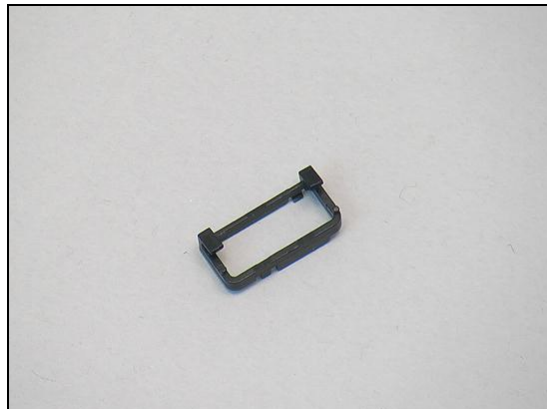
*Follow the 3.1 – 3.7, 3.9 – 3.10b Disassembly instructions!*

*Follow the 4.25 Removal instructions!*

Prepare the new Carrier Frame Receiver.

*Follow the 4.25 Installation instructions!*

*Follow the 5.1b – 5.2, 5.4 – 5.10 Reassembly instructions!*





## Replacement

### 4.10 Keyboard

*Follow the 3.1 – 3.2 Disassembly instructions!*  
*Follow the 4.11 Removal instructions!*  
Prepare the new Keyboard.  
*Follow the 4.11 Installation instructions!*  
*Follow the 5.9 – 5.10 Reassembly instructions!*

#### REMOVAL

There are three hooks securing the Keyboard.

Release the Keyboard from the bottom with the Flex Film Assembly Tool,

and gently peel off the Keyboard from the Front Cover Assy.





## Replacement: Keyboard

### INSTALLATION

Insert the three hooks on top of the Keyboard into the corresponding sockets on the Front Cover Assy.

***Make sure to remove the old Adhesive before replacement!***



Place the keyboard in its proper position and lock the three guiding pins at the bottom as shown in the picture.



Press down with fingers for about 10 seconds on all sides to make sure it is securely attached.





## Replacement

### 4.11 Co-Brand

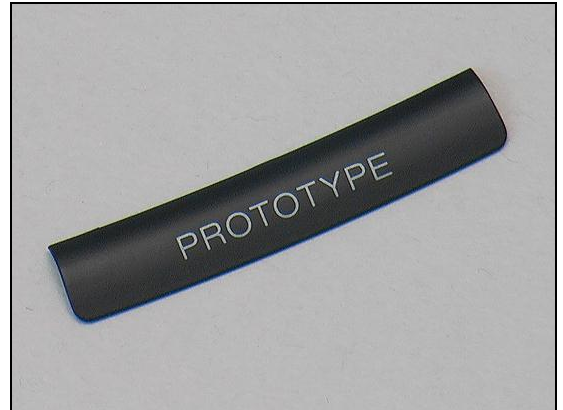
*Follow the 3.1 – 3.2 Disassembly instructions!*

Prepare the new Co-Brand.

*Follow the 5.9 – 5.10 Reassembly instructions!*

#### REMOVAL

There are seven hooks securing the Co-Brand.



Insert the Front Opening Tool into the slot to release the Co-Brand from the Front Cover Assy.



#### INSTALLATION

Place the new Co-Brand in its proper position according to the hooks.

***Make sure to remove all remains of the old Adhesive before replacement!***



## Replacement: Co-Brand

Press with fingers to make sure it is securely attached.







## Replacement

### 4.12 Camera Key

*Follow the 3.1 – 3.7 Disassembly instructions!*  
*Follow the 4.13 Removal instructions!*  
Prepare the new Camera Key.  
*Follow the 4.13 Installation instructions!*  
*Follow the 5.4 – 5.10 Reassembly instructions!*

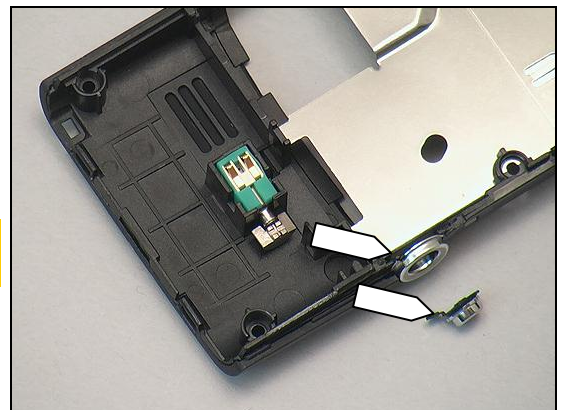
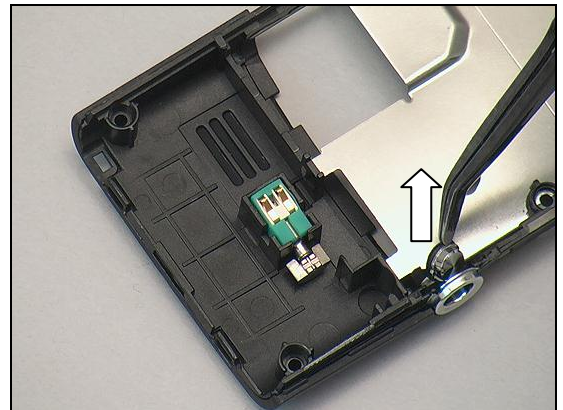
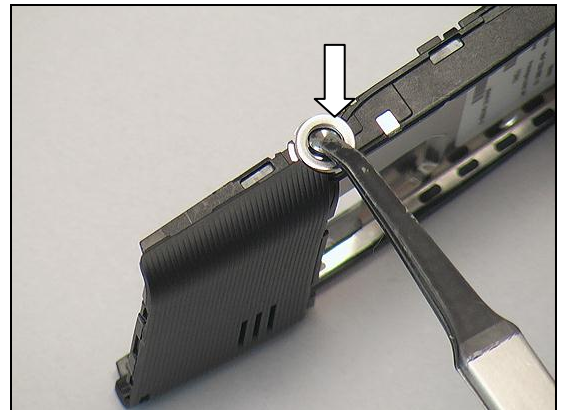
#### REMOVAL

Use the Flex Film Assembly Tool to push the Camera Key from the outside to release it from its socket.

Remove it.

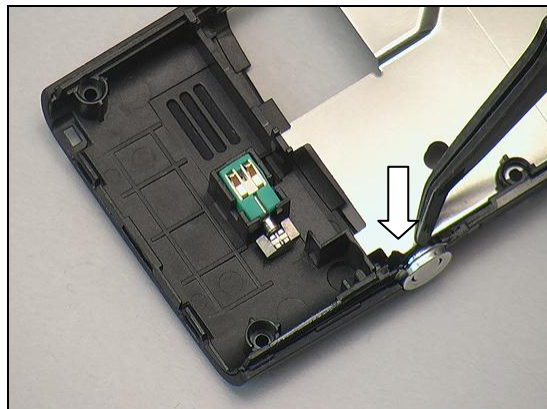
#### INSTALLATION

**Make sure the direction of the Camera Key is correct before installation.**

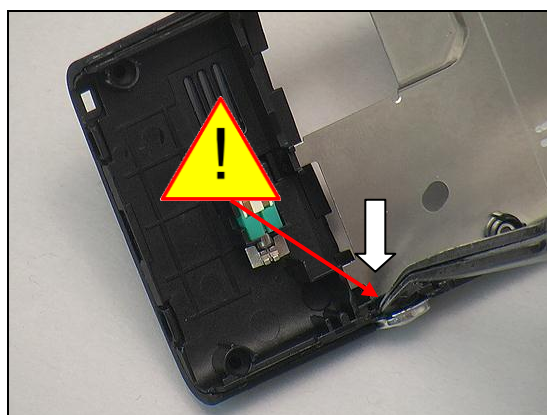


## Replacement: Camera Key

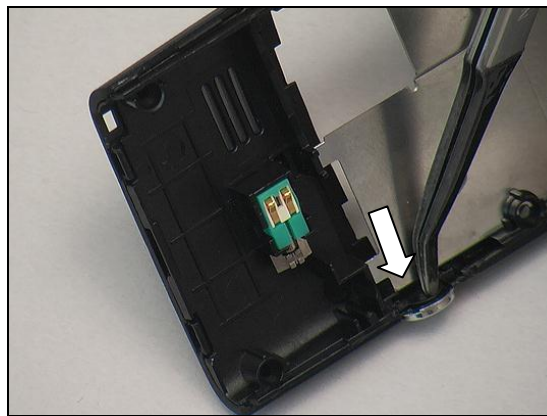
Place the Camera Key in its proper position by using the Flex Film Assembly Tool,



and secure its hook into the corresponding socket.



Slightly push with the Flex Film Assembly Tool from the inside to make sure it is securely attached.



## Replacement

### 4.13 Camera FPC

*Follow the 3.1 – 3.7 Disassembly instructions!*

Prepare the new Camera FPC.

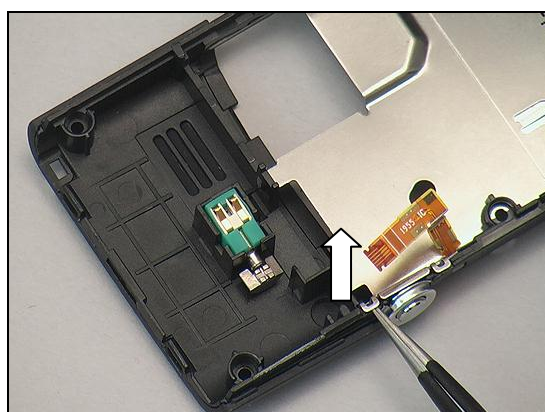
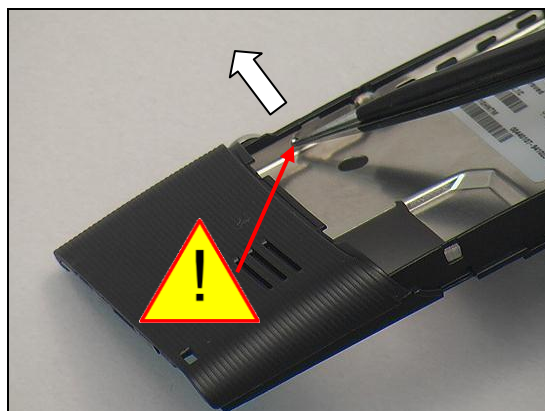
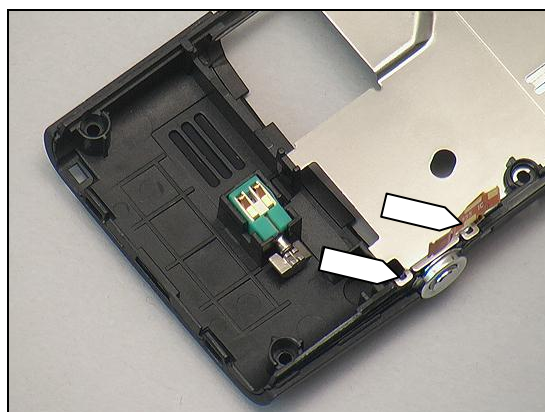
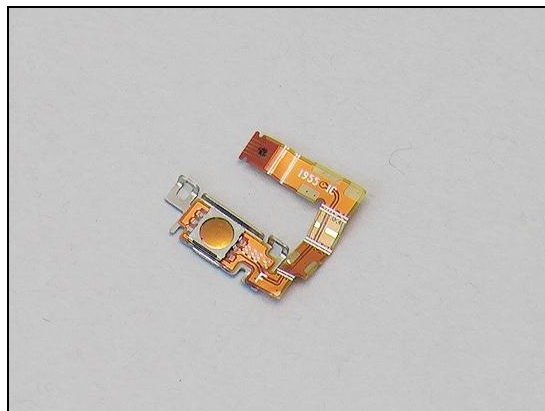
*Follow the 5.4 – 5.10 Reassembly instructions!*

#### REMOVAL

There are two hooks securing the Camera FPC on the top.

Turn the Carrier Assy over and slightly push the guiding pin from the outside with the tweezers to release the Camera FPC from its socket.

Use the tweezers to release the hook on the top as shown in the picture,

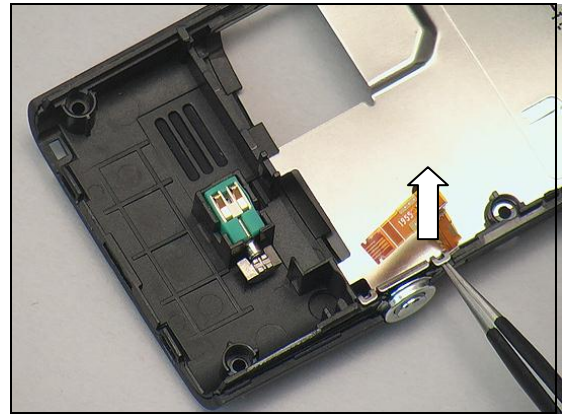




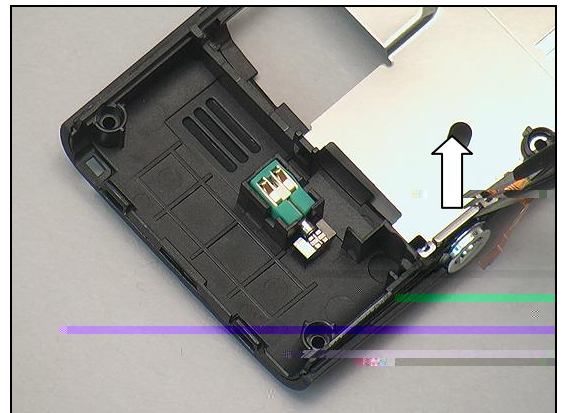


## Replacement: Camera FPC

Do the same with the other hook on the top.

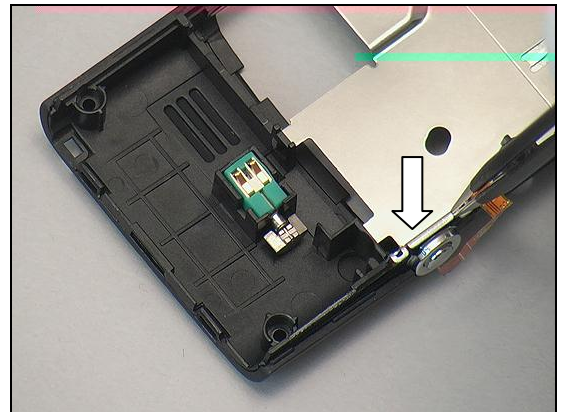


Remove it.

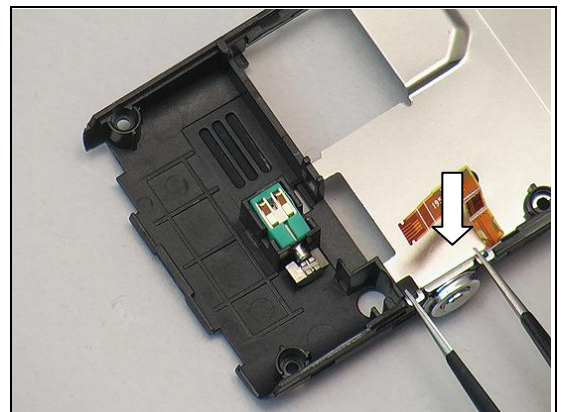


### INSTALLATION

Insert the Camera FPC into its corresponding socket aligned with the positions of the hooks.

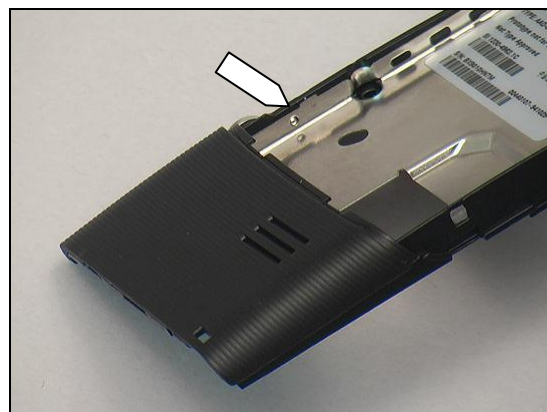


Push with the tweezers to secure its position.



## Replacement: Camera FPC

Make sure the guiding pin is securely attached as shown in the picture.



## Replacement

### 4.14 Keypad Dome Sheet

*Follow the 3.1 – 3.6 Disassembly instructions!*

Prepare the new Keypad Dome sheet and Tape Dome Sheet.

*Follow the 5.5 – 5.10 Reassembly instructions!*

#### REMOVAL

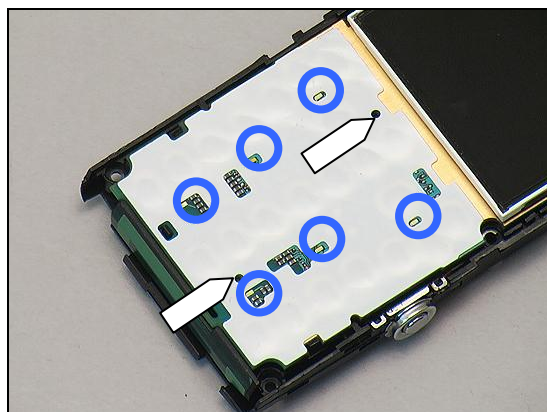
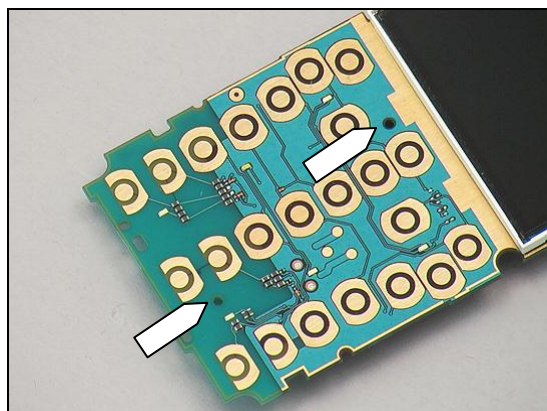
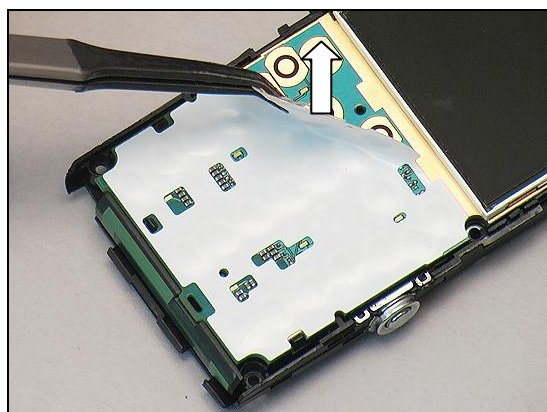
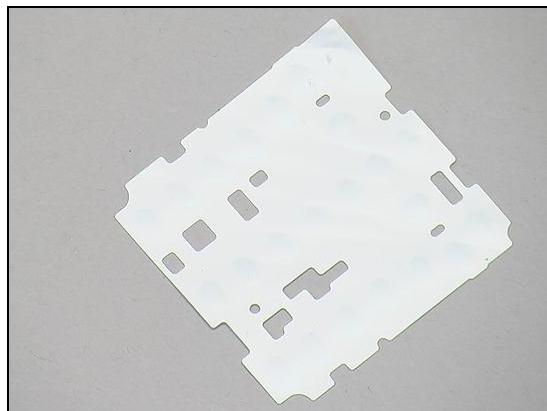
Carefully peel off the Keypad Dome Sheet from the PBA.

**Scrap! Not to be reused!**

#### INSTALLATION

Use these two corresponding holes to locate the position of the new Keypad Dome Sheet during installation.

Attach the Keypad Dome Sheet with fingers and verify the two guiding holes are properly aligned and the six LEDs can emit light through the holes of the Keypad Dome Sheet (as indicated by the blue circles).

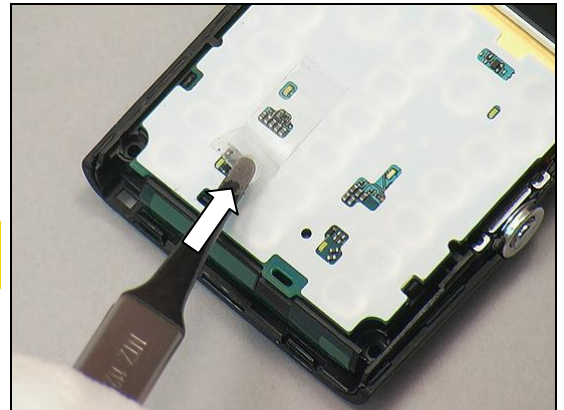




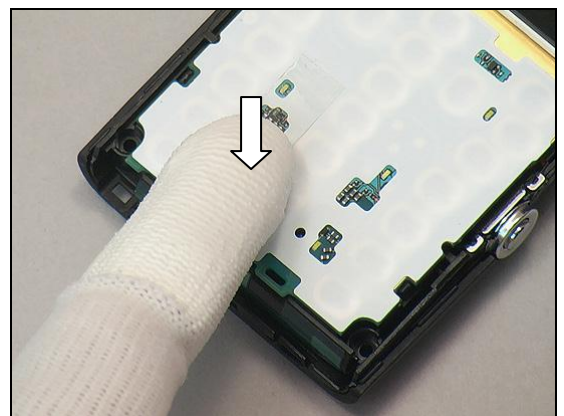
## Replacement: Keypad Dome Sheet

Use the Flex Film Assembly Tool to place the new Tape Dome Sheet in its proper position between the two dome columns and fully cover the three holes on the Keypad Dome Sheet.

**Be careful not to paste the Tape Dome Sheet on the Dome!**

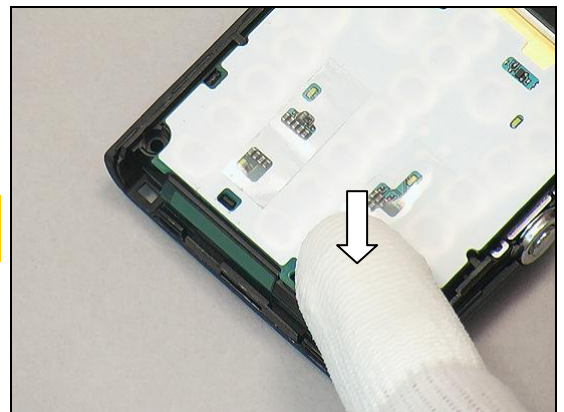


Gently press with fingers to make sure it is securely attached.



Do the same with the other one.

**Be careful not to paste the Tape Dome Sheet on the Dome!**





## Replacement

### 4.15 Camera 5MPixel

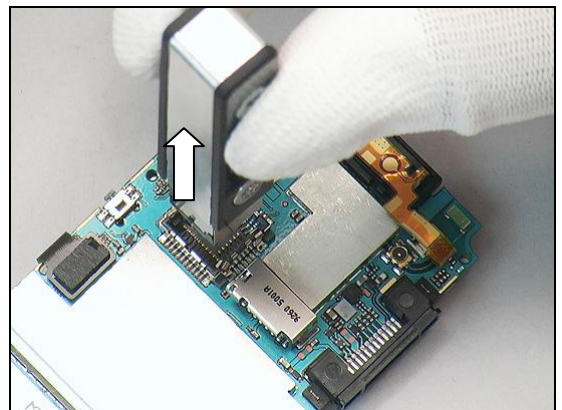
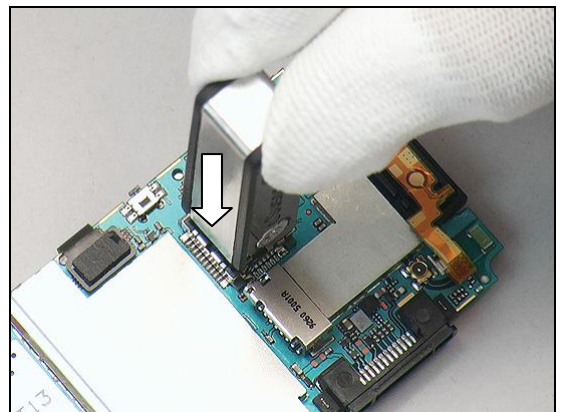
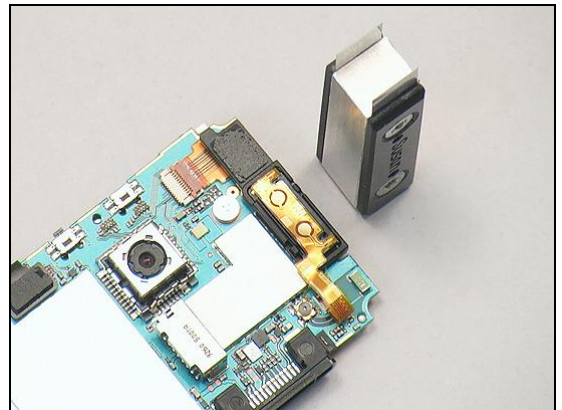
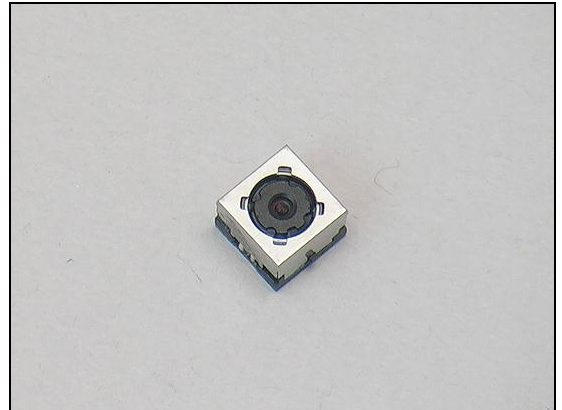
*Follow the 3.1 – 3.7 Disassembly instructions!*  
*Follow the 4.16 Removal instructions!*  
 Prepare the new Camera 5MPixel.  
*Follow the 4.16 Installation instructions!*  
*Follow the 5.4 – 5.10 Reassembly instructions!*

#### REMOVAL

***Make sure the direction of blades on the Camera Removal Tool matches the position of the Camera 5MPixel socket!***

Insert the tool all the way into the camera socket with the Camera Removal Tool in the position shown in the picture.

Gently pull the Camera Removal Tool out to release the Camera 5MPixel from its socket.



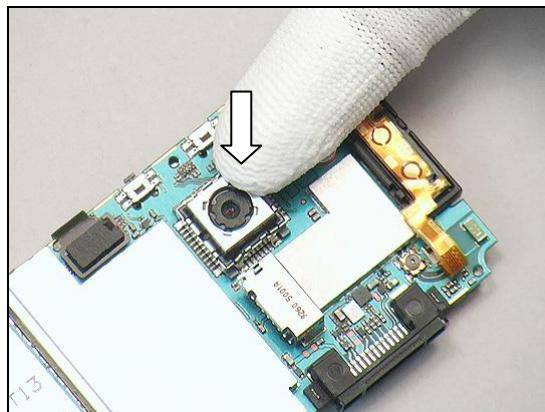
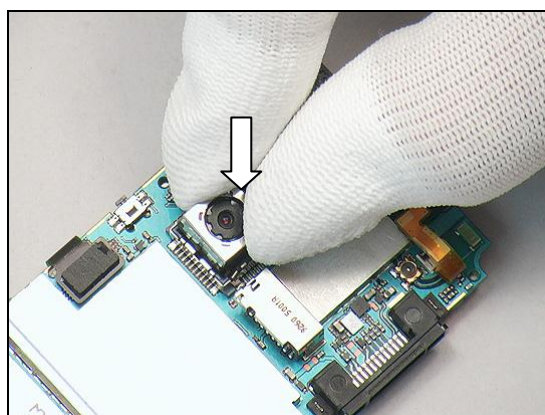
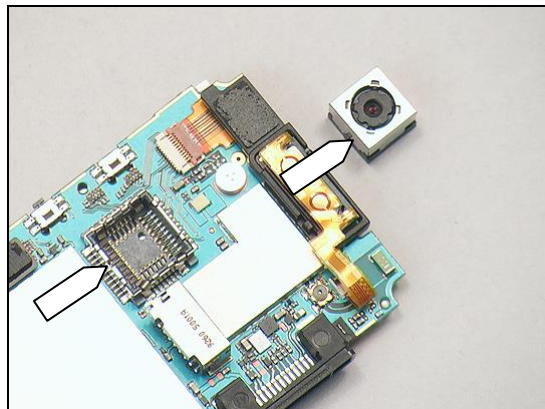
## Replacement: Camera 5Mpixel

### INSTALLATION

**Note the keying, camera – socket!**

Place the camera inside and in level with the socket,

and press with fingers, without touching the camera lens, to the bottom of the socket.





## Replacement

### 4.16 Shield Can Lid of Camera

*Follow the 3.1 – 3.7 Disassembly instructions!*

Prepare the new Shield Can Lid of Camera.

*Follow the 5.4 – 5.10 Reassembly instructions!*

#### REMOVAL

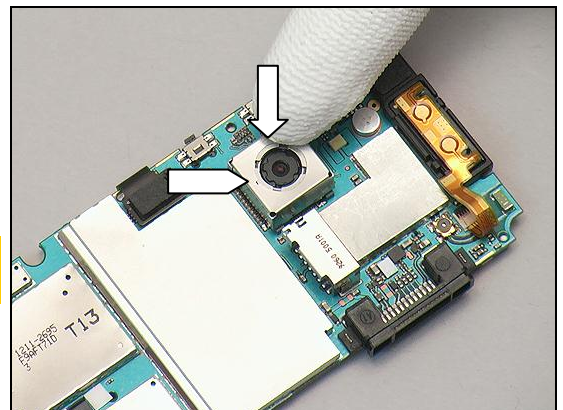
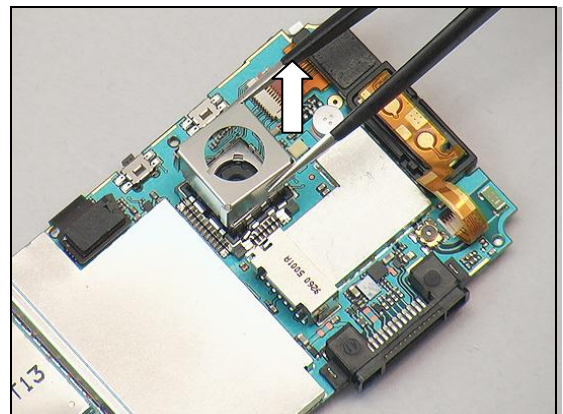
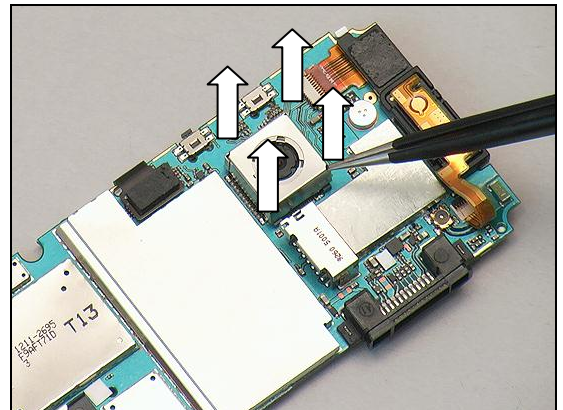
Insert the tweezers into the corners of the Shield Can Lid of Camera and pull upwards to release it,

and remove it.

#### INSTALLATION

Place the new Shield Can Lid of Camera on top of the Shield fence and press gently until it is securely attached.

**Note the position of this mark on the Shield Can Lid of Camera!**







## Replacement

### 4.17 Shield Can Lid of AGPS (J10i2 only)

*Follow the 3.1 – 3.7 Disassembly instructions!*

Prepare the new Shield Can Lid of AGPS.

*Follow the 5.4 – 5.10 Reassembly instructions!*

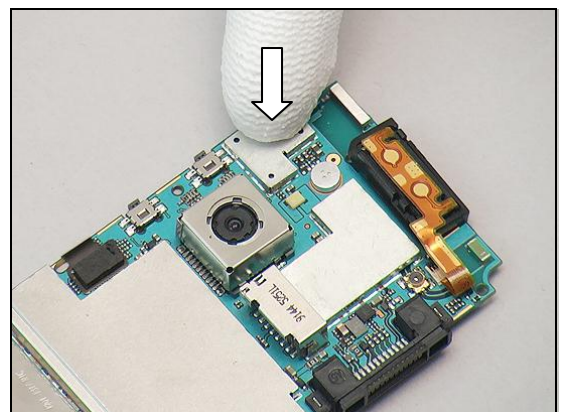
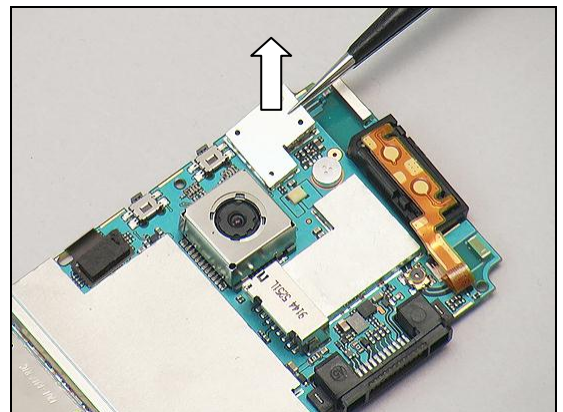
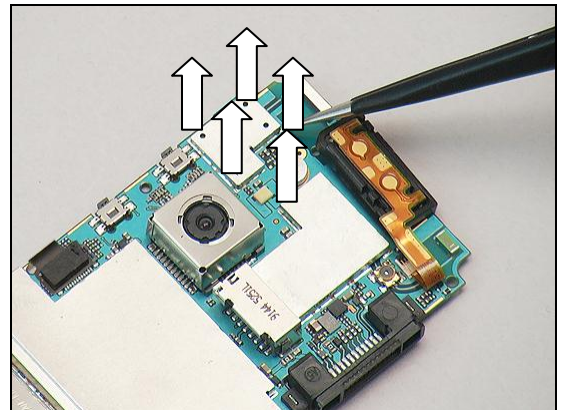
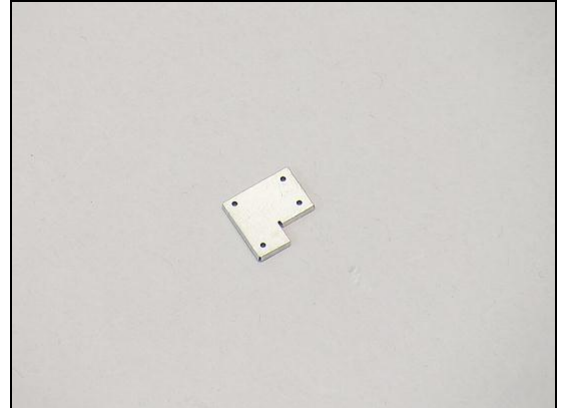
#### REMOVAL

Insert the tweezers into the corners of the Shield Can Lid of AGPS and pull upwards to release it,

and remove it.

#### INSTALLATION

Place the new Shield Can Lid AGPS on top of the Shield fence and press gently until it is securely attached.







## Replacement

### 4.18 Shield Can Lid of BT/WLAN

*Follow the 3.1 – 3.7 Disassembly instructions!*  
Prepare the new Shield Can Lid of BT/WLAN.  
*Follow the 5.4 – 5.10 Reassembly instructions!*

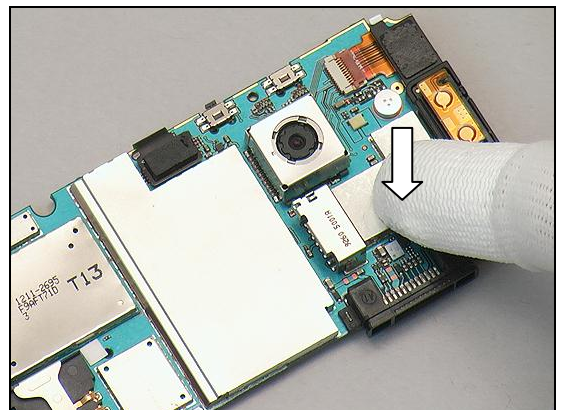
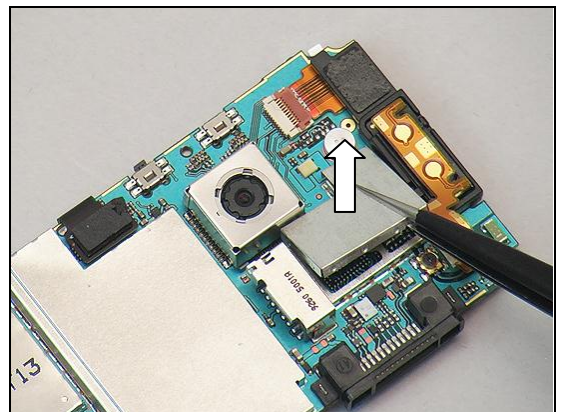
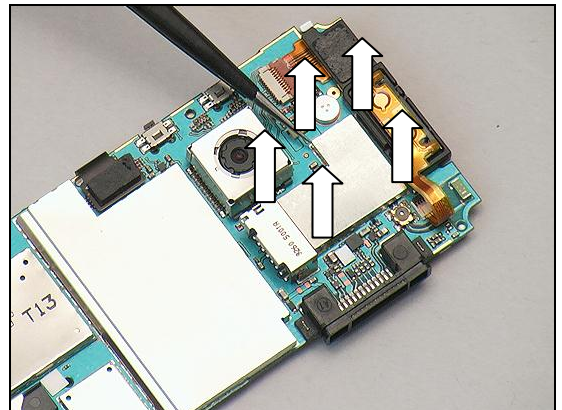
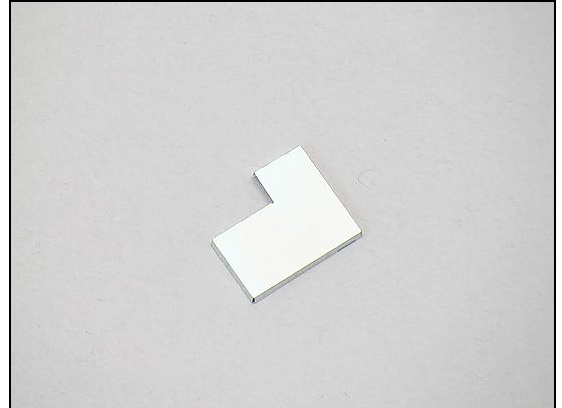
#### REMOVAL

Insert the tweezers into the corners of the Shield Can Lid of BT/WLAN and pull upwards to release it,

and remove it.

#### INSTALLATION

Place the new Shield Can Lid of BT/WLAN on top of the Shield fence and press gently until it is securely attached.



## Replacement

### 4.19 Shield Can Lid of BB

*Follow the 3.1 – 3.7 Disassembly instructions!*

Prepare the new Shield Can Lid of BB.

*Follow the 5.4 – 5.10 Reassembly instructions!*

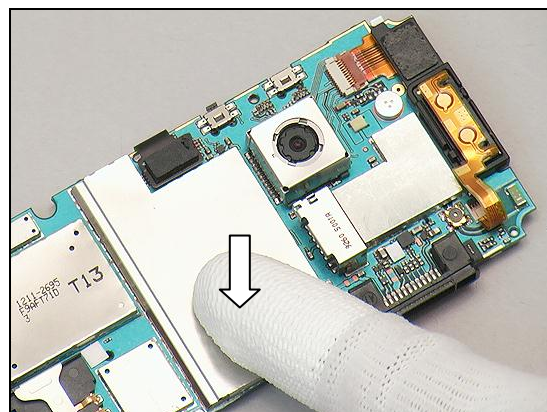
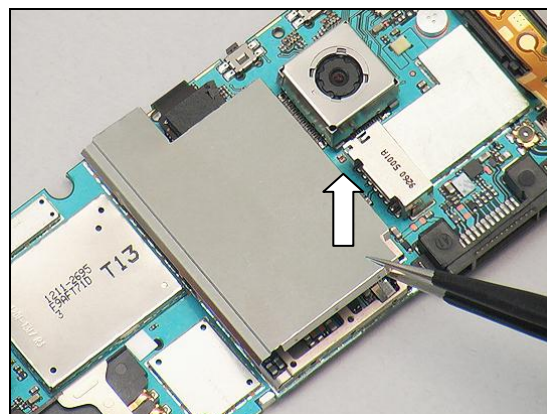
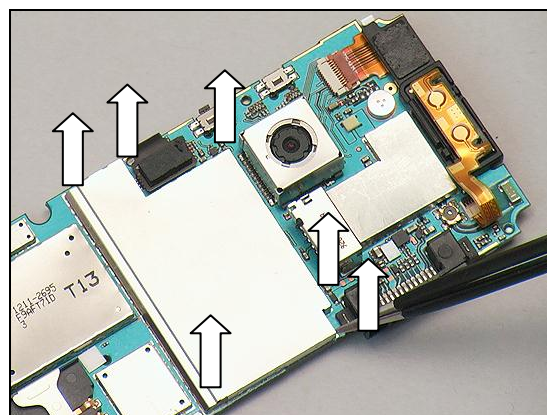
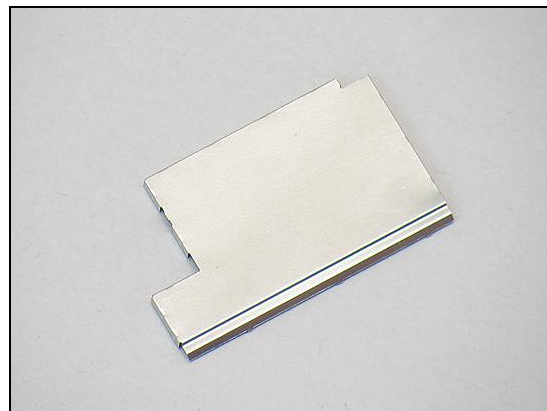
#### REMOVAL

Insert the tweezers into the corners of the Shield Can Lid of BB and pull upwards to release it,

and remove it.

#### INSTALLATION

Place the new Shield Can Lid of BB on top of the Shield fence and press gently until it is securely attached.





## Replacement

### 4.20 Sim Reader Tape

*Follow the 3.1 – 3.7 Disassembly instructions!*  
Prepare the new Sim Reader Tape.  
*Follow the 5.4 – 5.10 Reassembly instructions!*

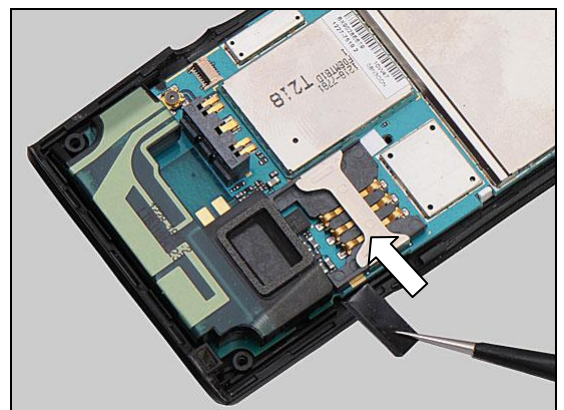
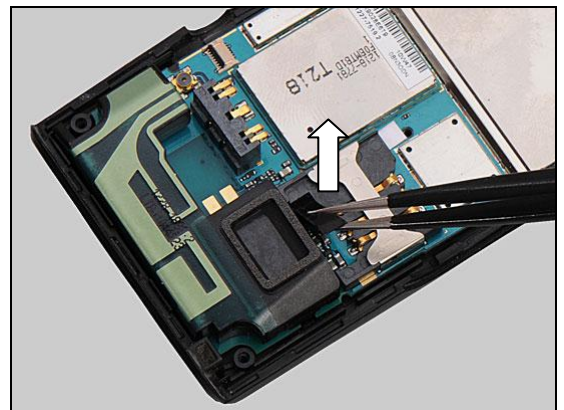
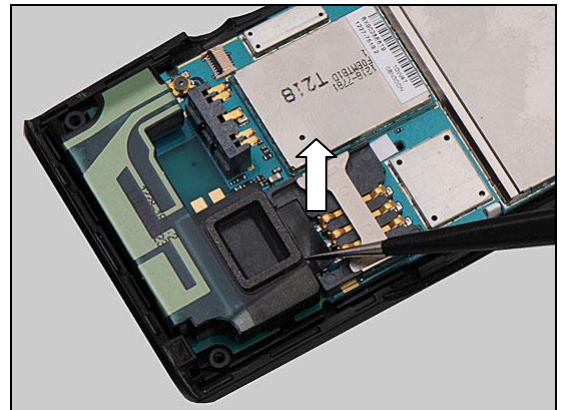
#### REMOVAL

Insert the tweezers into the corners of the Sim Reader Tape and pull upwards to release it,

and remove it.

#### INSTALLATION

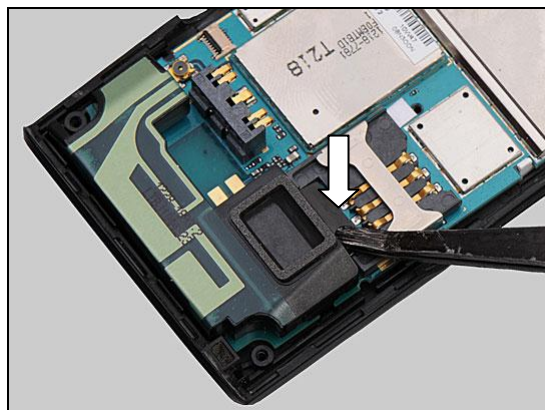
Place the new Sim Reader Tape on the PBA.





## Replacement: Sim Reader Tape

Press gently until it is securely attached by the Flex Film Assembly Tool.





## Replacement

### 4.21 Vibrator

*Follow the 3.1 – 3.7 Disassembly instructions!*

Prepare the new Vibrator.

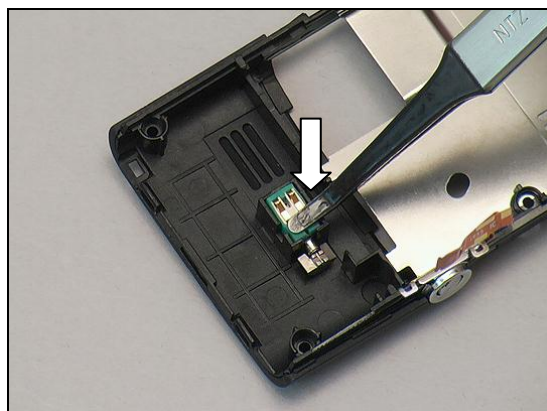
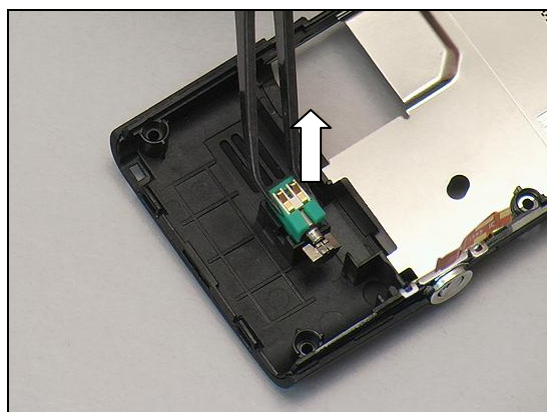
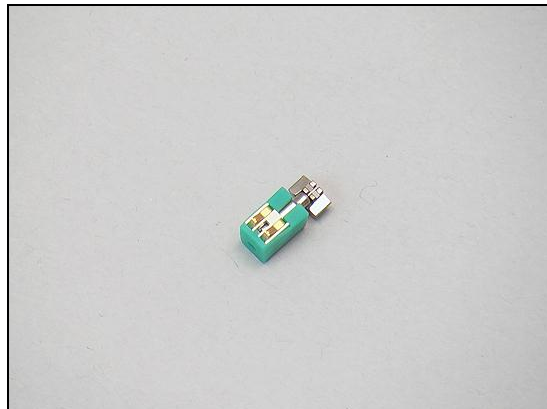
*Follow the 5.4 – 5.10 Reassembly instructions!*

#### REMOVAL

Gently use the Flex Film Assembly Tool to remove the Vibrator from the socket.

#### INSTALLATION

Place the Vibrator into the socket by using the Flex Film Assembly Tool and gently press to make sure it is securely attached.



## Replacement

### 4.22 Liquid Intrusion Indicator

#### INSPECTION

To check whether the Water Indicator has been activated (reddish colour), just remove the Battery Cover, Battery and the SIM card.

If activated:

*Follow the 3.1 – 3.7 Disassembly instructions!*

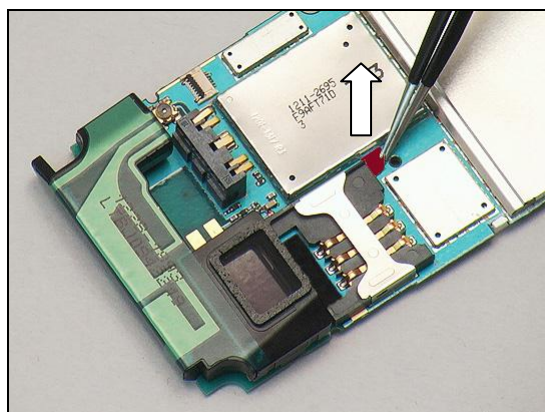
Prepare the new Liquid Intrusion Indicator.

*Follow the 5.4 – 5.10 Reassembly instructions!*



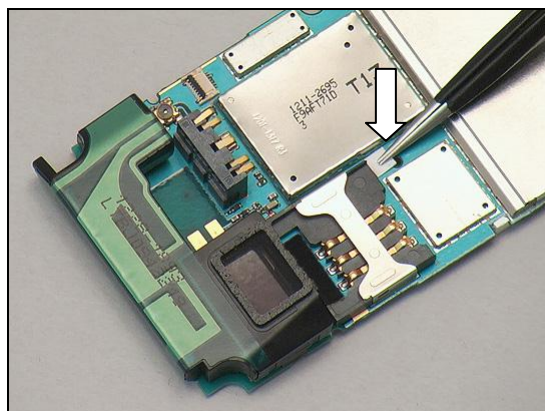
#### REMOVAL

Remove the activated Liquid Intrusion Indicator with the tweezers.



#### INSTALLATION

Attach the new Liquid Intrusion Indicator with the tweezers.



## Replacement

### 4.23 KRH Label

*Follow the 3.1 – 3.2 Disassembly instructions!*

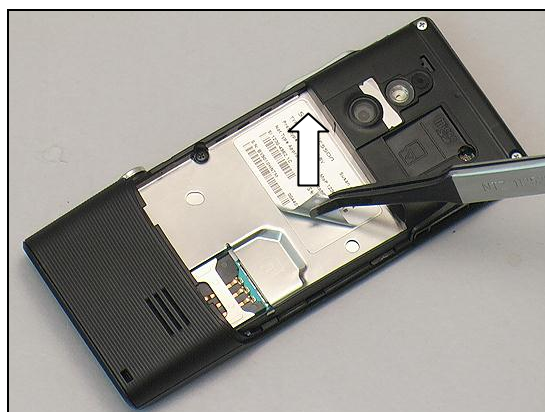
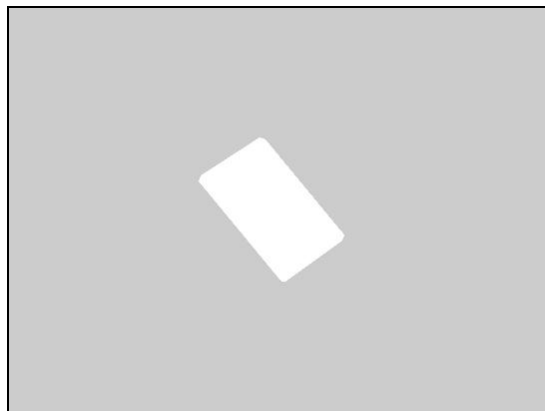
Prepare the new KRH Label.

*Follow the 5.9 – 5.10 Reassembly instructions!*

#### REMOVAL

Enter the information from the old KRH Label into the 'LabelMake' program before removal.

Carefully remove the Label by using the Flex Film Assembly Tool.



#### INSTALLATION

Check that the proper label format is loaded in the Zebra printer and write a new Label by using the 'LabelMake' software.

Place the new KRH Label inside the frame as shown in the picture.

**One label only is allowed!**



## Replacement

### 4.24 Speaker Mesh

*Follow the 3.1 – 3.3 Disassembly instructions!*

Prepare the new Speaker Mesh.

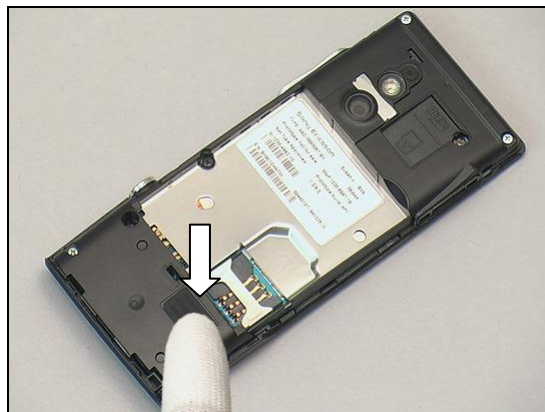
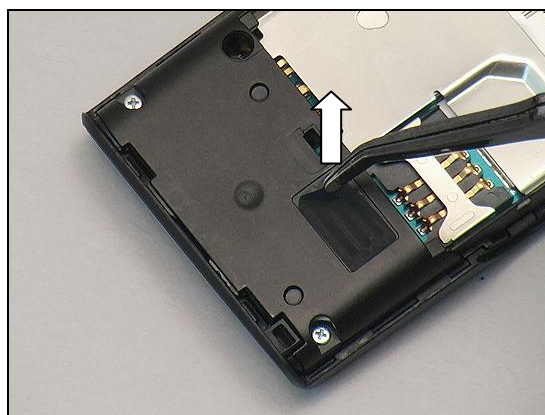
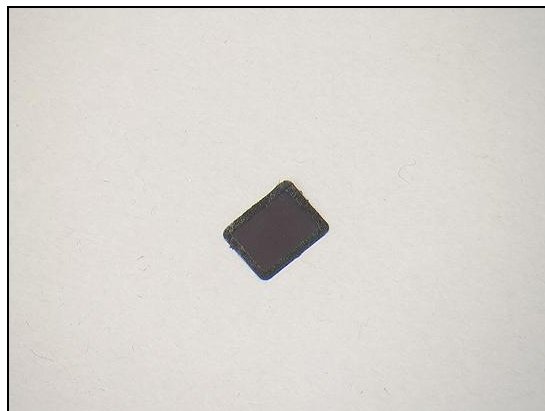
*Follow the 5.8 – 5.10 Reassembly instructions!*

#### REMOVAL

Gently peel off the Speaker Mesh by using the Flex Film Assembly Tool.

#### INSTALLATION

Place the Speaker Mesh in its proper position and press to make sure it is securely attached.





## Replacement

### 4.25 Volume Key

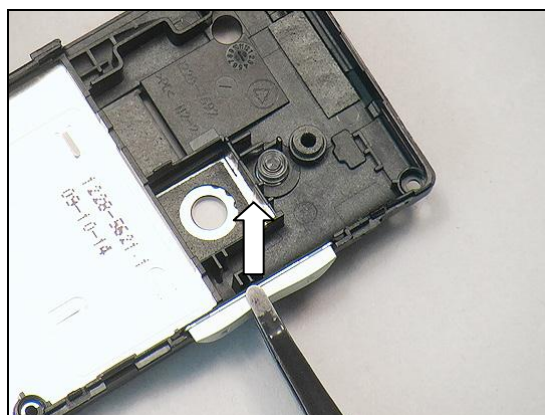
*Follow the 3.1 – 3.7 Disassembly instructions!*

Prepare the new Volume Key.

*Follow the 5.4 – 5.10 Reassembly instructions!*

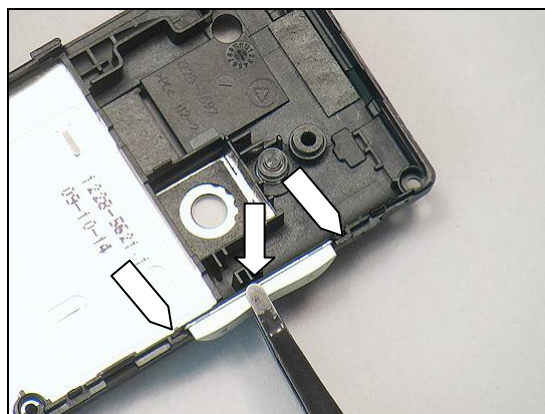
#### REMOVAL

Remove the Volume Key with the Flex Film Assembly Tool.

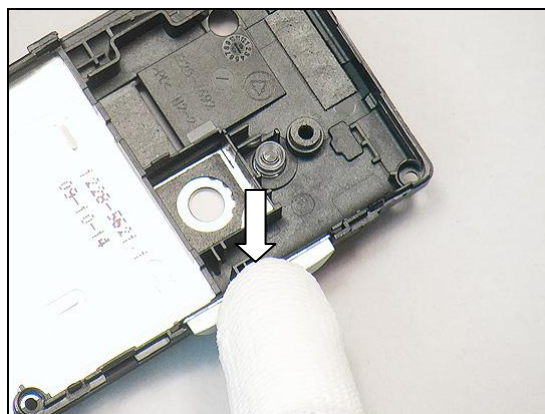


#### INSTALLATION

Insert both sides of the Volume Key into the corresponding slots on the Carrier Assy with the Flex Film Assembly Tool.



Gently press with fingers to make sure it is securely attached.



## Replacement

### 4.26 Receiver FPC

*Follow the 3.1 – 3.7, 3.9 – 3.10a / 3.10b Disassembly instructions!*

Prepare the new Receiver FPC.

*Follow the 5.1a / 5.1b – 5.2, 5.4 – 5.10 Reassembly instructions!*

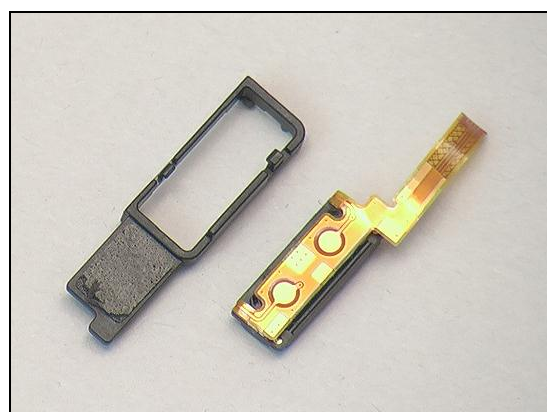
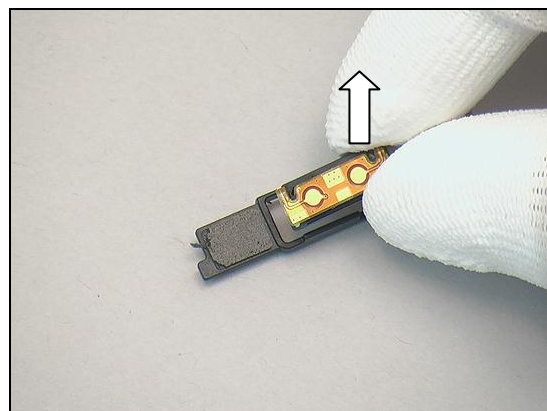
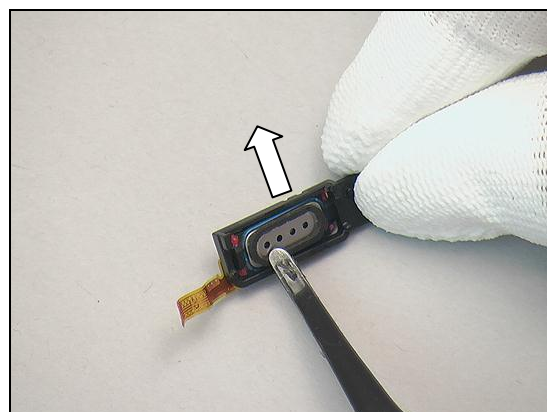
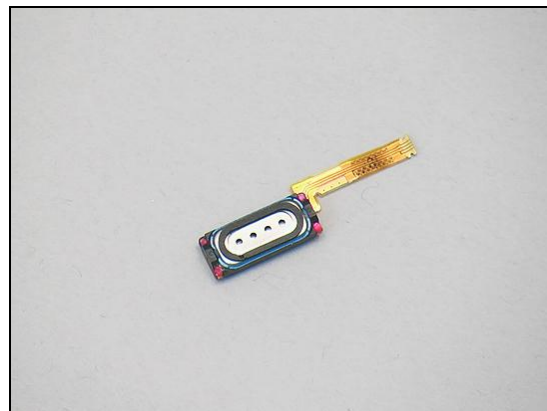
#### REMOVAL

Gently push like this to release the Receiver FPC from the Carrier Frame VT+Receiver / Carrier Frame Receiver.

Remove the Receiver FPC with fingers.

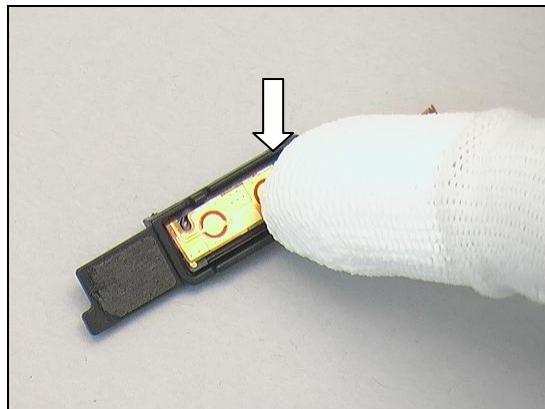
#### INSTALLATION

**Make sure the direction of the Receiver FPC before installation.**



## Replacement: Receiver FPC

Place the Receiver FPC into the Carrier Frame VT+Receiver / Carrier Frame Receiver with fingers and gently press to make sure it is securely attached.





## Replacement

### 4.27 VGA Camera (J10 Only)

*Follow the 3.1 – 3.7, 3.9 – 3.10a Disassembly instructions!*

Prepare the new VGA Camera.

*Follow the 5.1b – 5.2, 5.4 – 5.10 Reassembly instructions!*

#### REMOVAL

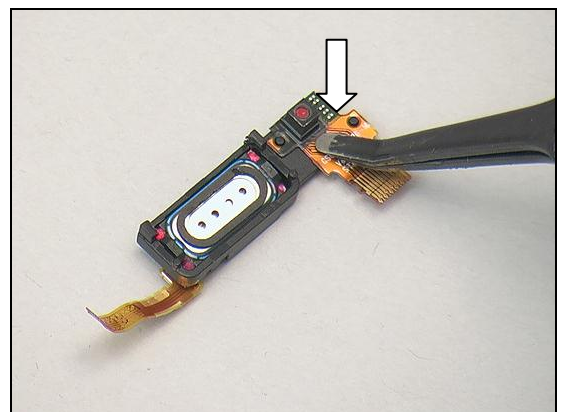
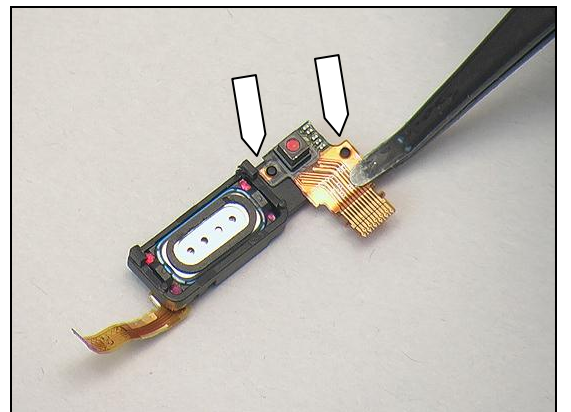
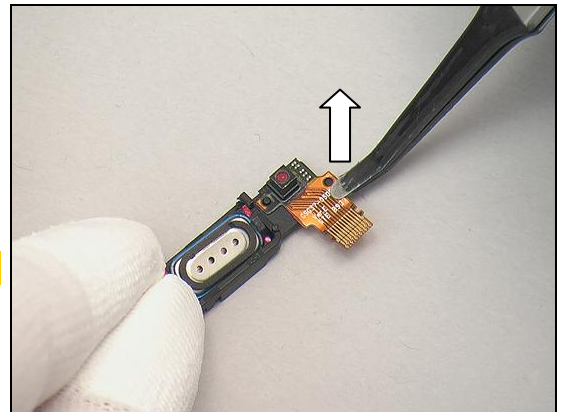
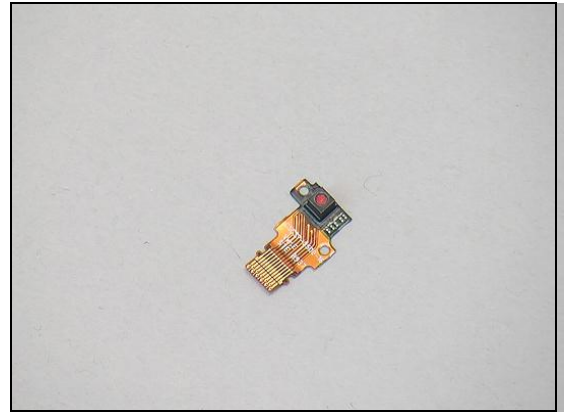
Gently peel off the VGA Camera by using the Flex Film Assembly Tool.

**Scrap! Not to be reused!**

#### INSTALLATION

Place the VGA Camera on top of the Carrier Frame VT+Receiver according to the two guiding pins by using the Flex Film Assembly Tool,

and gently press to make sure it is securely attached.







## 5 Reassembly

The reassembly is done in the following order:

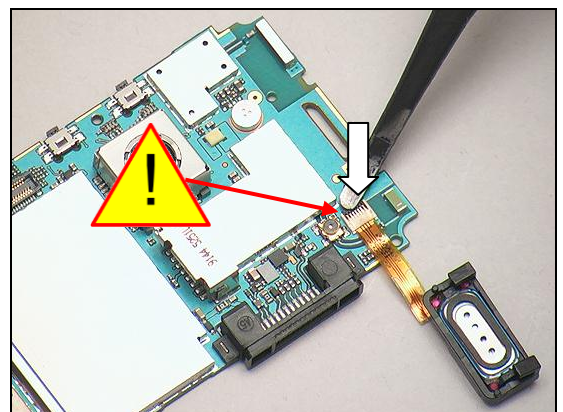
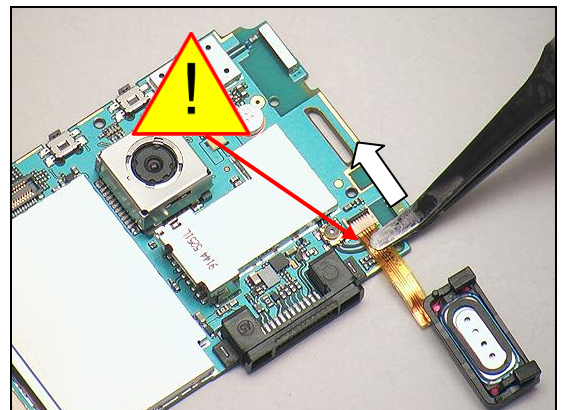
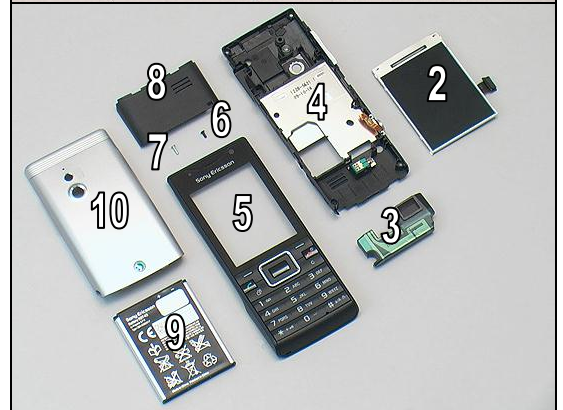
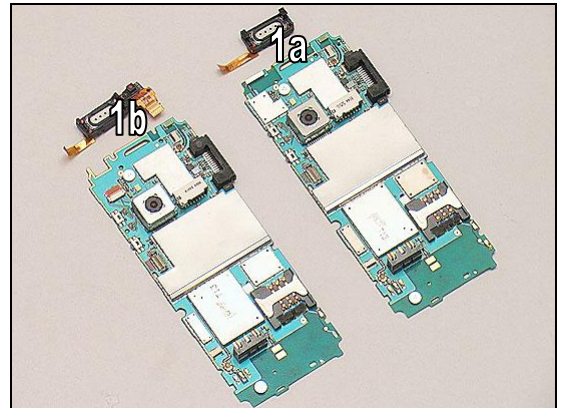
- 1a. Carrier Frame Receiver & PBA (J10i2 only)
- 1b. Carrier Frame VT+Receiver & PBA (J10 only)

2. Display 2.2 TFT
3. Loudspeaker
4. Carrier Assy
5. Front Cover Assy
6. Screw Len: 3.25 Diam: 1.4
7. Screw Len: 4.5 Diam: 1.4
8. Antenna Cover
9. Battery
10. Battery Cover Assy

### 5.1a Carrier Frame Assy Receiver & PBA (J10i2 only)

Use the Flex Film Assembly Tool to insert the flex into the connector,

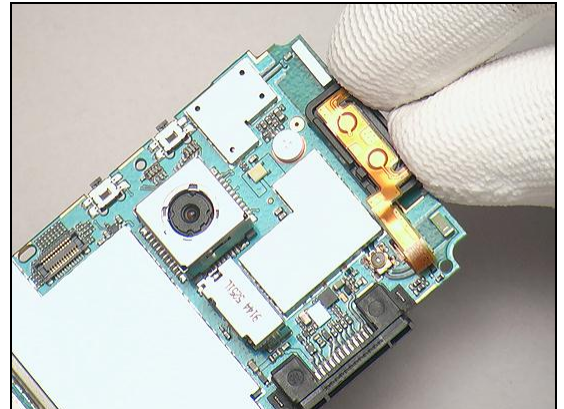
and lock the connector with the Flex Film Assembly Tool.



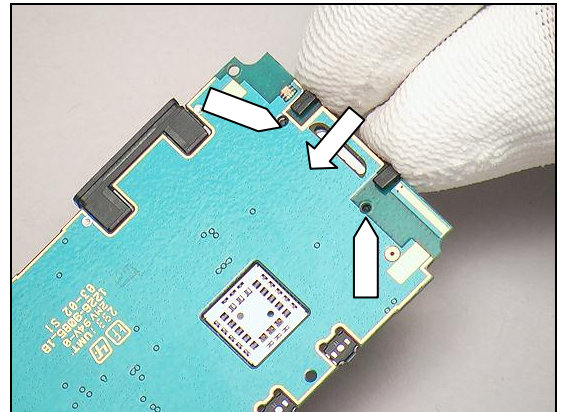


## Reassembly

Place the Carrier Frame Assy Receiver on top of the PBA with fingers.

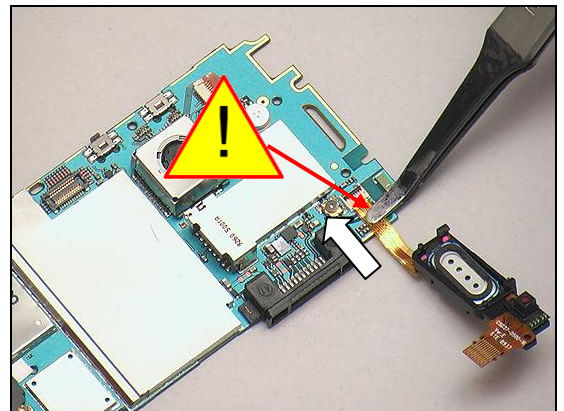


Gently press like this to secure its position and make sure these two guiding pins are properly attached.

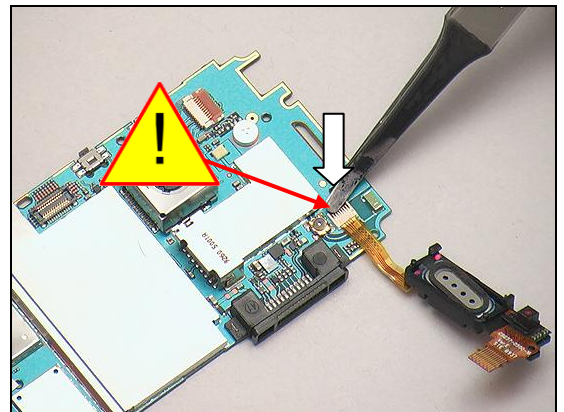


### 5.1b Carrier Frame Assy VT+Receiver (J10 only)

Use the Flex Film Assembly Tool to insert the flex into the connector,



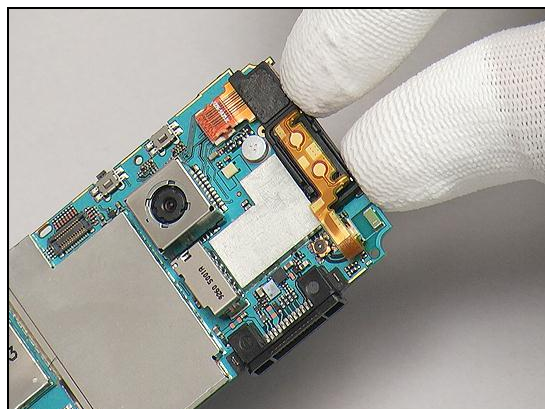
and lock the connector with the Flex Film Assembly Tool.



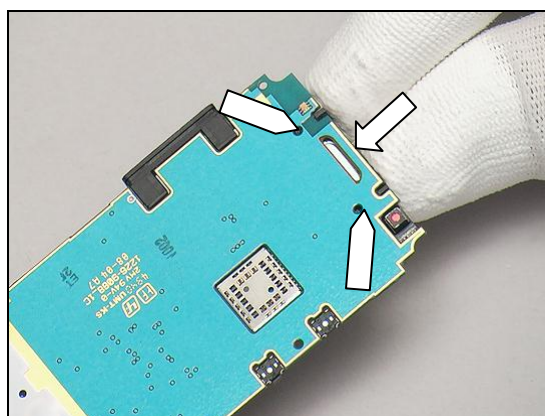


## Reassembly

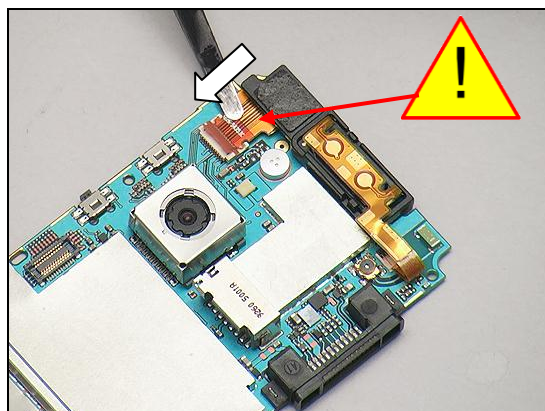
Place the Carrier Frame Assy VT+Receiver on top of the PBA with fingers.



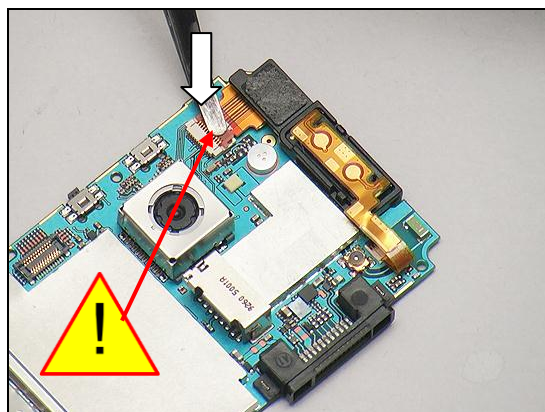
Gently press like this to secure its position and make sure these two guiding pins are properly attached.



Use the Flex Film Assembly Tool to insert the flex into the connector,



and lock the connector with the Flex Film Assembly Tool.

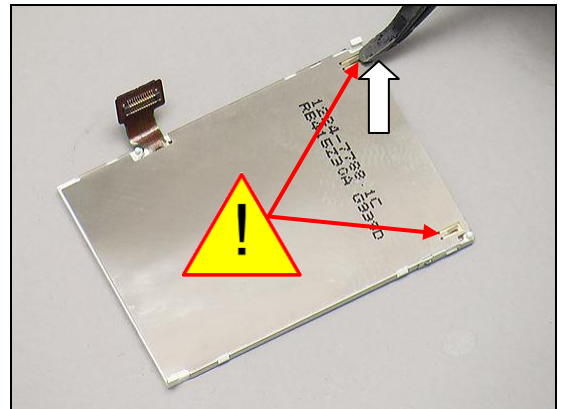




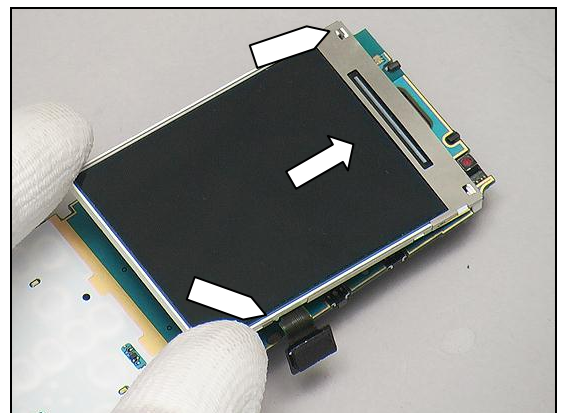
## Reassembly

### 5.2 Display 2.2 TFT & PBA

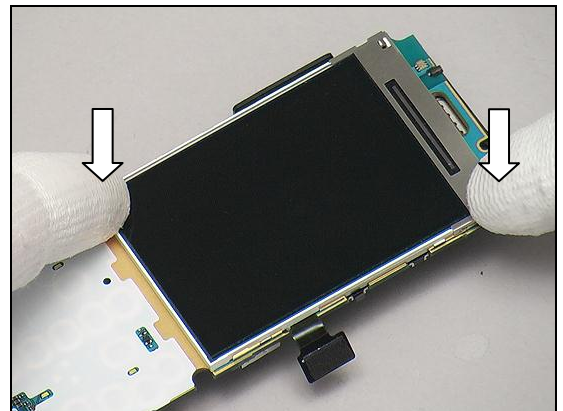
Use the Flex Film Assembly Tool to lift these two contact pins up before installation higher than the surface before installation.



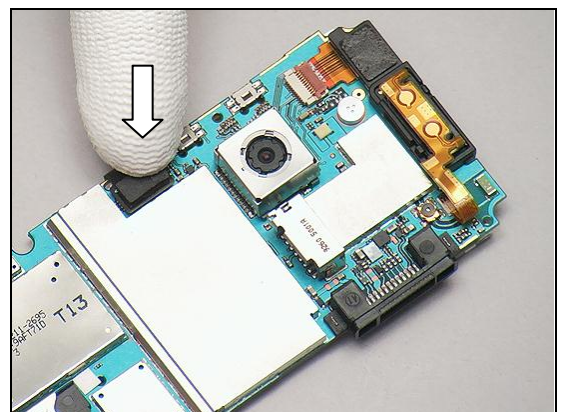
Insert the guiding pins on top left and middle right of the Display 2.2 TFT into the corresponding guiding holes on the PBA as shown in the picture,



Gently press on the both sides to snap the two hooks.



Turn the phone over and connect the connector with fingers.





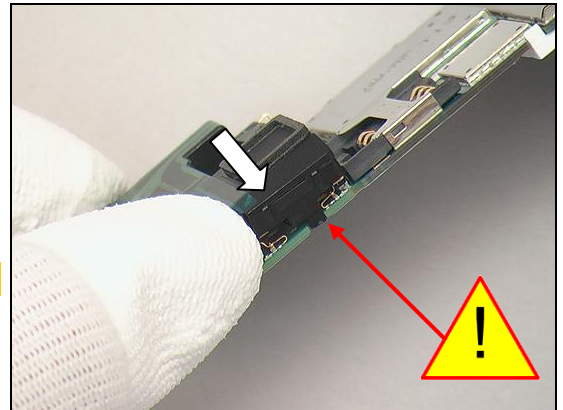


## Reassembly

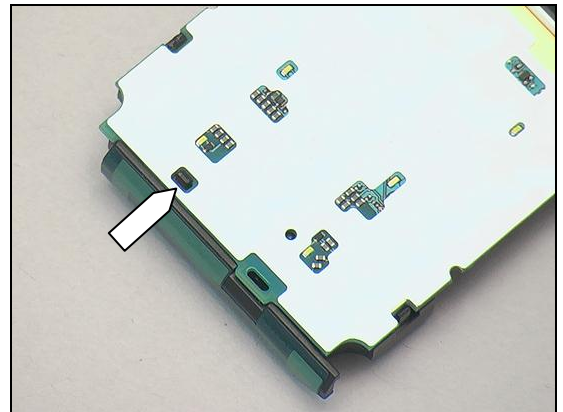
### 5.3 Loudspeaker

Insert the left hook of the Loudspeaker into its corresponding socket on the PBA,

**Be careful not to damage the hook!**

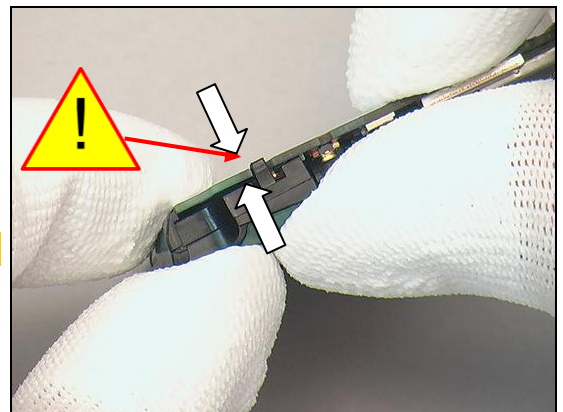


and make sure the hook on the middle of the Loudspeaker is properly attached in its corresponding hole as shown in the picture.



Slightly push like this to lock the right hook of the Loudspeaker to the PBA.

**Be careful not to damage the hook!**



### 5.4 Carrier Assy

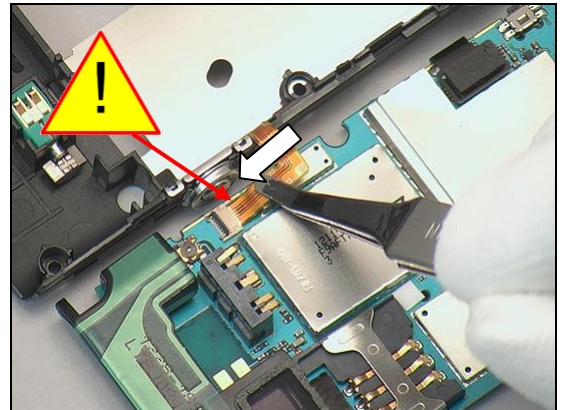
Place the Carrier Assy next to the PBA as shown in the picture.



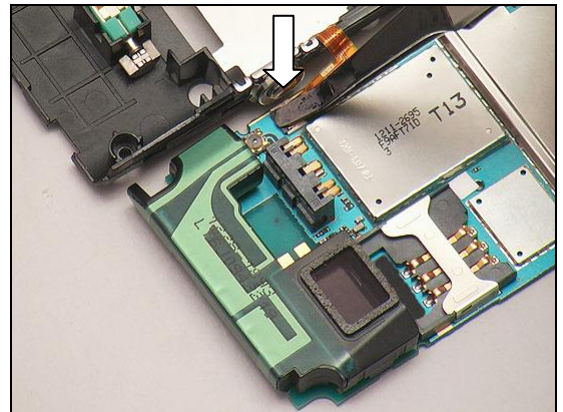


## Reassembly

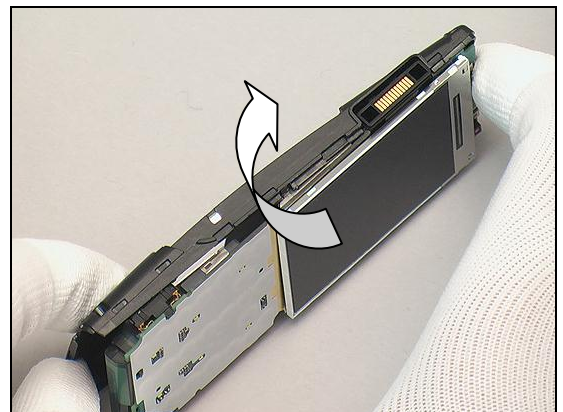
Use the Flex Film Assembly Tool to insert the flex into the connector,



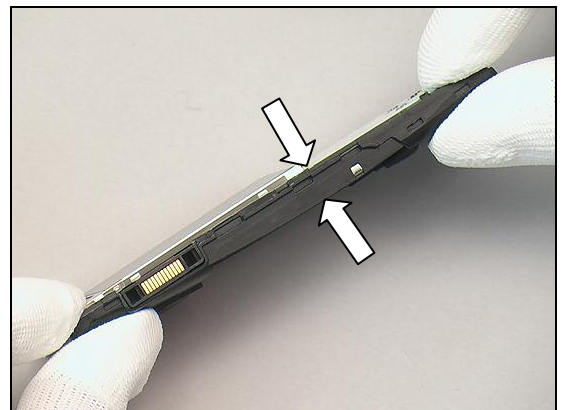
and lock the connector with the Flex Film Assembly Tool.



Place the left side of the PBA in its proper position on the Carrier Assy according to the System Connector,



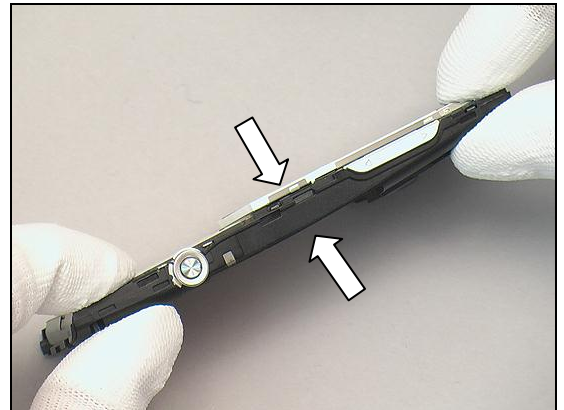
and gently press the left side to make sure the PBA and the Carrier Assy are securely snapped.





## Reassembly

Do the same with the right side.

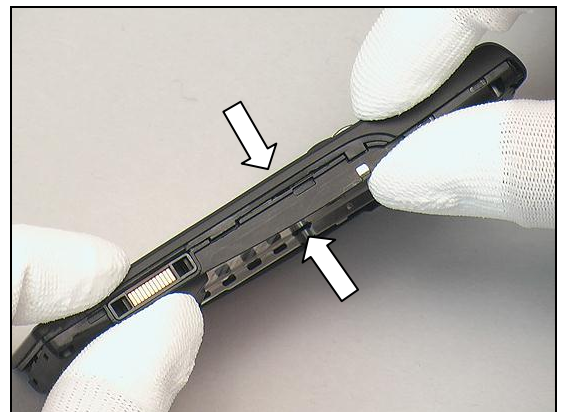


### 5.5 Front Cover Assy

Place the Front Cover Assy on top of the Carrier Assy according to the five guiding pins.



Press like this to snap the hooks on the left side of the Front Cover Assy.



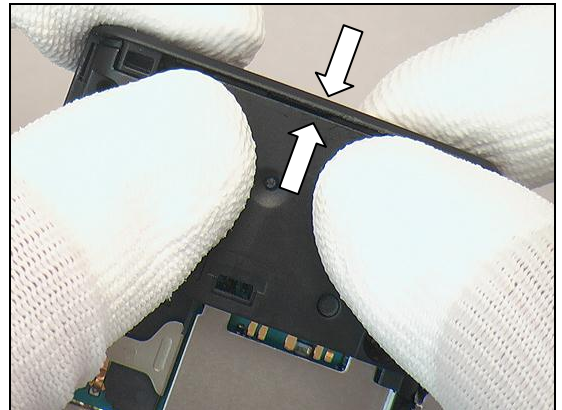
Press like this to snap the hooks on the right side of the Front Cover Assy.





## Reassembly

Finally snap the hooks at the bottom to make sure the Front Cover Assy is securely attached to the Carrier Assy.



### 5.6 Screw Len: 3.25 Diam: 1.4

Apply 10N\*cm torque when tightening the Screw Len:3.25 Diam:1.4 with the JCIS bit.



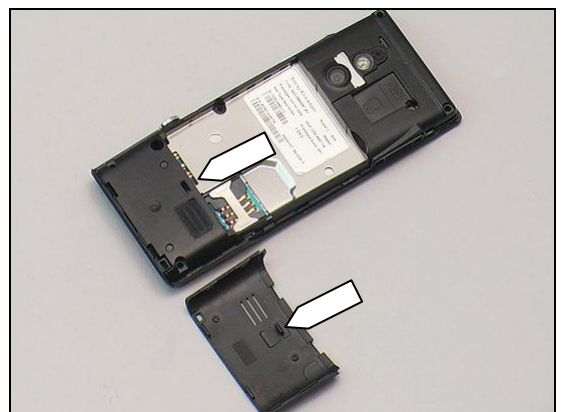
### 5.7 Screw Len: 4.5 Diam: 1.4

Apply 12N\*cm torque when tightening the Screw Len:4.5 Diam:1.4 with the JCIS bit.



### 5.8 Antenna Cover

**Make sure the hook on the middle of the Antenna Cover is inserted into the corresponding hole on the Carrier Assy when mounting.**



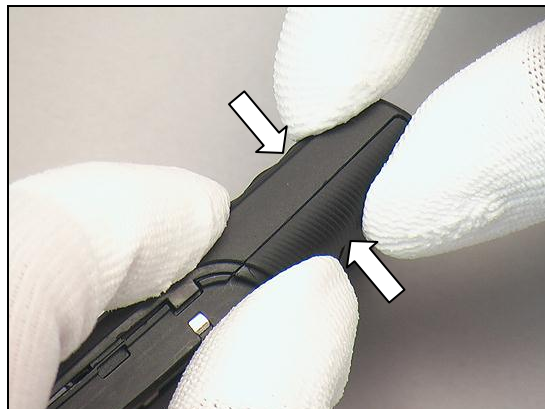


## Reassembly

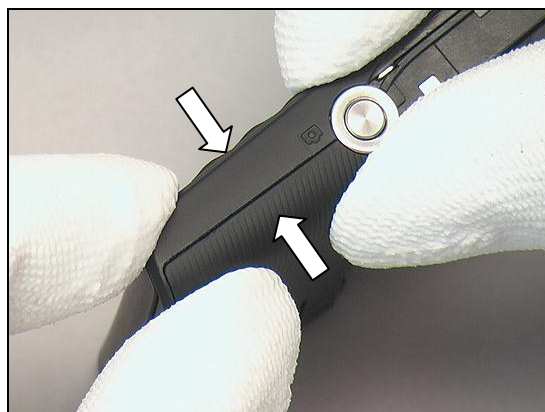
Place the Antenna Cover on top of the Carrier Assy as shown in the picture.



Press like this to snap the hooks on the left side.



Do the same with the opposite side.



## 5.9 Battery

Insert the Battery on the top as shown in the picture.



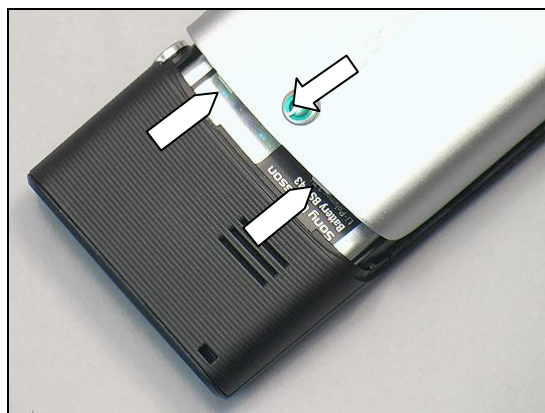
## Reassembly

Press on the battery to secure its position.



### 5.10 Battery Cover Assy

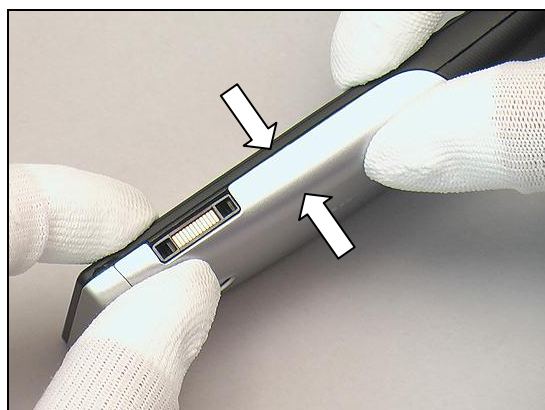
Insert the two hooks at the bottom of the Battery Cover Assy into the corresponding slots on top of the Antenna Cover.



Close the Battery Cover Assy with fingers.

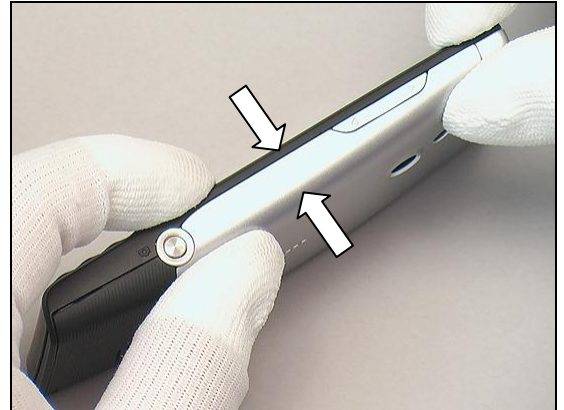


Press the left side of the battery Cover Assy to lock the hooks with fingers.



## Reassembly

Do the same with the opposite side.





## 6 Revision History

Rev.	Date	Changes / Comments
1	2010-Mar-08	Initial release
2	2011-Apr-20	Updated SIM reader Tape